



CAPE COD SKI CLUB

www.capecodskiclub.com • P.O. Box 146, Hyannis, MA 02601-0146 • (508) 398-USKI • September 1999

President's Letter

by Alan Kogos

Fall is upon us. Temperatures are dropping and foliage season is just around the corner. That means ski season is not too far behind.

I know it's a little early to start thinking of snow, but if you are die-hard ski or snowboard enthusiast and you can't wait to the steeps: then join us at the first Cape Cod Ski Club general meeting on **Monday, September 20 at 7:30 p.m., Mitchell's Steak House, Hyannis.**

At the first meeting of the 1999-2000 season, you will be overwhelmed with information about the club. There will be tables set up for membership, newsletter, Cape Cod Ski Club apparel and lots of information on this season's trips. Come meet and talk to all the trip leaders and listen as they describe their trips.

Also, all board officers and committee chair will be on hand to assist and answer any questions you might have about the Club.

Calling all trip leaders!

The Club is always searching for good, responsible people to help run ski trips. Whether you have experience or not, it's

a great way to get more involved with the Club and meet a lot of great people.

If you are interested in learning to become a trip leader, fill out the form/survey here in the newsletter and send it to Travel Chairs John and Barbara Halliday, P.O. Box 1709, Harwich, MA 02645 or just phone them at (508) 432-1399.

There will also be a table at the general meeting for members to sign up as trip leaders. Remember, experience is not necessary. We'll train you!

Trip sign-up and dues

Dues for the 1999-2000 season must be paid before you can sign up for any trip on the schedule. If you send in a reservation form without payment of dues first, your trip form and check will be returned and your spot lost on the list. So, cover your "trail" and send your dues to the Membership Chairman Paul Richard.

Don't miss the first general meeting. Come join us for appetizers, fun and a lot of information. And ... don't forget your checkbook!

Fri.- Sun., December 10-12

'Present'ing Smuggler's Notch ... gift for the whole family

by Mark Lovely

Some presents are worth giving, again and again. Treat the family to an early holiday present again this year ... a weekend of skiing for mom, dad and the kids at Smuggler's Notch,



Doug Scharbach, Sharon Sutphen and Shirley Sutphen head out to the lifts at Smuggler's Notch in Vermont.

(Photo courtesy of Shirley Sutphen)

Vermont! Three days of skiing, two nights lodging, and three meals (two breakfasts and one dinner buffet) ... all for \$150 per person with special pricing for children.

The location is at family friendly Smuggler's Notch in Vermont. The date is Friday to Sunday, December 10-11, 1999.

This is a carpool, family trip. Sleeping accommodations are double occupancy; all in slopeside condos. Everyone is welcome to use the Aqua Sports Center with a heated pool, bathhouse, and hot tub.

There is apres ski entertainment geared for the entire family with afternoon bonfires, hot chocolate, lighted ice skating, and lighted snow tubing on Sir Henry's Hill.

Thursday, September 30

Only 10 seats left to see 'Cats'

by Paula Fedele

It all begin in London in 1981 when "Cats" pounced upon unsuspecting theater goers with its majesty and grace. The following year, the legend came to Broadway as "Cats" opened at the Winter Garden Theater where it remains today as the longest running show in Broadway history.

Now, the phenomenon that is "Cats" continues to grow. More than just the longest, continuously touring musical of our time, "Cats" has become America's — and the world's — favorite family musical.

In theaters from Alaska to Zurich, Mexico to Japan, the music of Andrew Lloyd Webber and the magic of "Cats" is now and forever making new fans, touching new hearts and reaching new heights.

Romantic cats, theatrical cats, fanatical cats ... they ring out the child in all of us and they are waiting for you to let the memory live again!

"Meow" everyone! That's right ... meow ... not ciao! Hope everyone's summer is off to a great start. Cape Cod Ski Club members and your adult guests are invited to join me for a fun-filled evening as once again we journey to Boston to the Shubert Theater for a "cultural" night. I have only 44 tickets reserved for the Thursday, Sep-tember 30 performance.

Plymouth & Brockton Bus leaves Harwich at 4:30 p.m., another stop in Barnstable leaving at 5 p.m. and a final stop in Sagamore at 5:15 p.m. We should arrive in Boston approximately one hour before the 7:30 p.m. performance. This will allow enough time for a bit to eat at a local restaurant.

The cost for this fun night is \$67 and includes one orchestra seat, round-trip bus transportation, bus driver tip, appetizer



First General Meeting set for Monday September 20 7:30 p.m.

Iyanough Road, Route 28, Hyannis

Tourney cancelled

Due to a lack of interest, the proposed golf tournament set for September has been cancelled. Only one phone call was received from an interested member.

Maybe the notice was too short ... maybe everyone has their sights set on skiing already ... maybe ...

We'll try one more time for a tournament in the spring when everyone has had all winter to think about playing golf. When you're shoveling your driveway this coming January, you can envision teeing off on the 1st hole, as your Ski Club buddies cheer you on. Watch for more information.

Smuggler's Notch is comprised of three mountains with 60 trails and a 283-foot vertical rise, all spread across 1,000 acres with boundary-to-boundary skiing. If you brave enough, try the East's only triple black diamond!

The cost for adults is \$150, children aged 7 to 12 are \$135 and children under 6 are free with a paying adult. Call for information, (508) 394-8286 after 5 p.m.

Send your reservation form with condo-mates and check for \$75 per person made payable to the Cape Cod Ski Club now to Mark Lovely, 11 Lakefield Road, South Yarmouth, MA 02664. Balances are due November 15, 1999.

and beverage en route. There will also be "Cats" give-aways for the winners of tricky trivia questions on the ride home.

If you are interested in going to this fun-filled performance of "Cats," complete a trip reservation form and mail with a check for payment in full of \$67 made payable to the Cape Cod Ski Club to Paula Fedele, 48 Johnny Cake Road, Centerville, MA 02632. For more information, call me at (508) 771-2012.

Club Quickies

Committee meeting

The next meeting of the Executive Committee is set for Wednesday, September 8 at Patti Drake's home at 6:30 p.m. Executive Committee meetings are open to any interested Club member.

For directions call Patti at (508) 896-9616.

General meetings

The general meetings for the 1999-2000 season will be held again at Mitchell's Steak House on Iyanough Road/Route 28 in Hyannis. The meetings are always on the third Monday of the month regardless of a holiday.

The schedule is September 20, October 18, November 15, December 20, January 17, February 21, March 20, and April 17. Meetings start at 7:30 p.m.

Table of Contents

Aspen, Colorado	8
Killington Week	6
Lake Placid Weekend	6
Membership Form	8
Midi: Sugarloaf/USA	7
Mini: Attitash, Red Jacket, Wildcat	6
Mini: Sunapee, Cavendish Pointe, Okemo	4
Mini: Waterville Valley, Indian Head, Loon	5
Mt. Sainte Anne Family Week	3
Park City, Utah	3
Reggae Weekend at Sugarloaf/USA	7
Smuggler's Notch Family Weekends	2, 6
Sugarloaf/USA Week	7
Sunday River Week	2
Trip Reservation Form	4, 6, 8
Val d'Isere, France	5
Women's Weekend, Sugarloaf/USA	7

BULK RATE
US POSTAGE PAID
HYANNIS MA 02601
PERMIT NO 34

99241
CHRISTI KEMPREKOS
36 DOLLY ST
SO. DENNIS MA 02660

CAPE COD SKI CLUB
P.O. Box 146
Hyannis, MA 02601

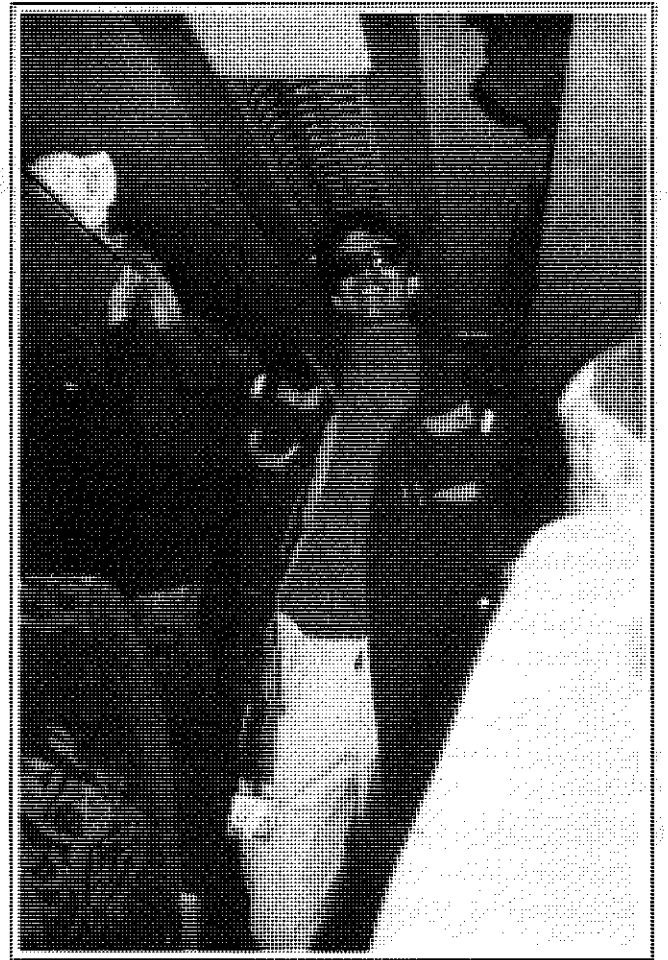
Day trips, send \$15 to reserve, bring lift \$\$ on bus

DAY	DATE	DESTINATION	F/G	\$A	\$J	\$S	XC
Wednesday	December 1	Mystery	G	?	X	?	?
Wednesday	December 8	Mystery	G	?	X	?	?
Wednesday	December 15	Stratton		\$30	X	\$26	
Sunday	January 2	Bretton Woods	F				
Wednesday	January 5	Okemo		\$33	X	\$24	
Sunday	January 9	Killington	F	\$44			
Wednesday	January 12	Loon		\$24	X		Y
Sunday	January 16	Sunday River	F	\$34	\$23	\$23	Y
Wednesday	January 19	Wildcat		\$19.50	X	\$19.50	Y
Sunday	January 23	Cannon	F				
Wednesday	January 26	Sunday River		\$29	X	\$20	Y
Sunday	January 30	Waterville	F	\$40	\$30		Y
Wednesday	February 2	Killington		\$40			
Sunday	February 6	Okemo	F	\$33	\$24	\$24	
Wednesday	February 9	Wildcat		\$19.50		\$19.50	Y
Sunday	February 13	Stratton	F	\$38	\$26	\$23	
Wednesday	February 16	Pico		\$22	X	\$16	
Sunday	February 20	Killington	F	\$44	\$37	\$29	
Wednesday	February 23	Attitash	F	\$39	\$29	\$20	Y
Sunday	February 27	Sugarbush	F	\$42	\$37	\$27	
Wednesday	March 1	Cannon		\$35	X	\$27	
Sunday	March 5	Shawnee Peak	F	\$35	\$23	\$23	
Wednesday	March 8	Killington		\$40	\$34	\$26	
Sunday	March 12	Wildcat	F	\$35	\$20		Y
Wednesday	March 15	Okemo		\$26	X	\$19	
Sunday	March 19	Loon	F	\$34	\$34	\$27	Y
Wednesday	March 22	THANK YOU TRIP ... VOLUNTEERS OR TRIP LEADER PARTICIPATE ON THIS FUN TRIP!					
Sunday	March 26	Attitash	F	\$39	\$29	\$20	Y
Wednesday	March 29	Sugarbush		\$22	X	\$22	
Wednesday	April 5	Mystery					

F = Family G = Guest (age 21 & over) \$A = Adult price \$J = Junior Price \$S = Senior price X = Not applicable

XC Y = Cross country skiing available. Call for price information. All prices and dates subject to change/correction.

Rates and ages for juniors and seniors varies from mountain to mountain. Be sure to list ages on reservation form. For information regarding group lessons and rentals, please call the trip leader. Please list as much information, i.e., lessons, rentals, as possible on reservation form which will make reservations and accounting at themountain easier and faster for the trip leader.



Ross Donaghy on a day trip to somewhere! Watch next month's newsletter for the updated day trip list complete with trip leader names, addresses and phone numbers.

Minis, midis, weekends, weeks

Fri.- Sun. **Smuggler's Notch, VT \$135 - \$150**
 Dec. 10-12 Mark Lovely (508) 394-8286
 11 Lakefield Road, South Yarmouth, MA 02664

Fri.- Sun. **Women's Weekend, Sugarloaf, ME \$188**
 Dec. 10-12 Marilyn Murray (508) 430-1607
 376 Pleasant Bay Road, Harwich, MA 02645

Fri.- Sun. **Lake Placid, NY \$222**
 Jan. 7-9 Beverly Murphy (508) 432-4473
 281 Great Western Road, Harwich, MA 02645

Tue.- Wed. **Waterville/Indian Head/Loon Mini, NH \$152**
 Jan. 11-12 Gina Schuh (508) 760-0085
 P.O. Box 1143, Dennisport, MA 02639

Wed.- Fri. **Sugarloaf Midi, ME \$205**
 Jan. 19-21 Ruth Starr (508) 896-7558
 P.O. Box 378, Brewster, MA 02631

Sun.- Fri. **Sunday River, ME \$285**
 Jan. 23-28 Rose Medeiros (508) 428-5378
 1519 Newtown Road, Cotuit, MA 02635

Sat.- Sat. **Aspen, Colorado \$1,279**
 Jan. 29-Feb. 5 Beverly Murphy (508) 432-4473
 Mark Lovely (508) 394-8286
 281 Great Western Road, Harwich, MA 02645

Tue.- Wed. **Attitash/Red Jacket/Wildcat Mini \$156**
 Feb. 8-9 Charlotte & Bob Montbach (508) 945-2425
 720 Main Street, Chatham, MA 02633

Sat.- Sat. **Park City, UT \$1,079**
 Feb. 12-19 Terri & Roland Jennex (508) 394-3320
 33 Payson Path, West Yarmouth, MA 02673

Sun.- Fri. **Mont Sainte Ann, QU \$219 - \$279**
 Feb. 20-25 Dennis O'Neill (508) 255-2268
 RMS Route 28, Orleans, MA 02653

Sun.- Fri. **Sugarloaf/USA, ME \$275**
 Feb. 27 - Mar. 3 Ruth Starr (508) 896-7558
 P.O. Box 378, Brewster, MA 02631

Sun.- Fri. **Killington, VT \$299 - \$329**
 Mar. 5-10 c/o John Halliday (508) 432-1399
 P.O. Box 1709, Harwich, MA 02645

Tue.- Wed. **Sunapee/Cavendish Pointe/Okemo \$144**
 Mar. 14-15 Dottie Lovely (508) 394-0488
 19 Capt. Besse Road, S. Yarmouth, MA 02664

Fri.- Sun. **Smuggler's Notch, VT \$135 - \$150**
 Mar. 17-19 Mark Lovely (508) 394-8286
 11 Lakefield Road, South Yarmouth, MA 02664

Fri.- Sun. **Val d'Isere, France \$1,549**
 Mar. 24 - Apr. 2 Pauline Judge (508) 394-2350
 Gina Schuh (508) 760-0085
 21 Trowbridge Path, West Yarmouth, MA 02673

Fri.- Sat. **Sugarloaf Reggae Weekend \$267**
 Apr. 7-9 Marilyn Murray (508) 430-1607
 376 Pleasant Bay Road, Harwich, MA 02645

A bit more info on signing up for trips

It is recommended that you SIGN UP EARLY for trips. They fill up fast and waiting lists are created for people who have to cancel. The earlier you sign up, the better your chances are to get on a trip.

All trips involve a \$50 cancellation fee and possibly other cancellation penalties as the trip nears and expenses are incurred by the Club.

It is also strongly recommended that you purchase trip cancellation insurance. For anywhere between \$35 to \$50 you can secure your monies in case you have to cancel off a trip.

Sign up early, sign up a friend, and get a voucher!

This year the Cape Cod Ski Club is happy to give you a voucher for signing up early and/or referring a new member. Please use your voucher on any trip ... not just a day trip. Sorry, they're only good for the 1999-2000 season. Vouchers are not transferable, and ONLY ONE may be used per trip.

If you, or someone you refer, joins the Ski Club before October 31, 1999, you'll get a voucher good for \$5 off the cost of any trip the Cape Cod Ski Club is offering this year! Don't wait any longer, sign up now!

CAPE COD SKI CLUB		
Officers		
President	Alan Kogos	255-3957
Vice President	Nolan Williams	349-7378
Treasurer	Kathy Richards	945-4337
Secretary	Bev Murphy	432-4473
Members-At-Large		
Michelle Hathaway		
Mark Lovely	394-8286	
Ruth Starr	896-7558	
Committee Chairs		
Membership:	Paul Richard	362-7193
Newsletter:	Pauline Judge	394-2350
Publicity:	Shannon Selby	778-8469
Social:	Patti Drake	896-9616
Travel	John Halliday	432-1399
Asst. Travel:	Barbara Halliday	432-1399
Sunshine:	Dutchie Connell	432-5313
(after 4 p m)		
Deadline for copy and advertisements for the next newsletter is August 25, 1999. Mail copy to Cape Cod Ski Club Newsletter, 21 Trowbridge Path, West Yarmouth, MA 02673 or call (508) 394-2350 and leave a message. Visit us on the internet at capecodskiclub.com or email us at downhill@capecodskiclub.com		
Interested advertisers are urged to call for rates.		
Classifieds are free to Club members.		

MOVING? Please advise Paul Richard, Membership Chairman, (508) 398-USKI (398-8754) (508) 362-7193 or write the Club at P.O. Box 146, Hyannis, MA 02601, if you have a change of address. Bulk rate mail does not get forwarded!

And while we on the subject of mail, the number that appears at the very top of the label on your newsletter is your membership number for this season (99) ... just in case you were wondering.

\$5	CAPE COD SKI CLUB	\$5
TRIP VOUCHER		
1999 - 2000		
Good toward any trip of your choice.		
Send to trip leader with on due reservation form.		
Issued to	SAMPLE	
Date	September 21, 1999	
By	Membership Chairman	
Expires April 12, 2000		

Fri. - Sun., January 7-9

Lake Placid, home of the Olympics

by Beverly Murphy

Join us on a ski trip to Whiteface Mountain in Lake Placid, New York, home of the 1932 and 1980 Winter Olympics where Eric Heiden won 5 gold medals in 1980 and the U.S. Hockey Team won a gold medal in ice hockey against the Soviet Union.

The trip takes place January 7 through 9, 2000. We depart Harwich at noon on Friday with a pickup in Barnstable departing at 12:30 p.m. and a final pickup in Sagamore, departing at 12:45 p.m.

We will arrive in Lake Placid sometime between 7-8 p.m. Please, pack a lunch and snacks for the ride as this is a non-stop trip. After we arrive in Lake Placid, it's a short walk to town for a late dinner.

We will leave the mountain at 4 p.m. on Sunday, January 9 to arrive home on the Cape around 11 p.m. This is also a non-stop trip and a box lunch will be provided for the trip home.

The cost of the trip is \$222 and includes:

- 2 nights accommodations, double occupancy at the Olympic Motor Inn which is conveniently located a short walk to many of the shops, restaurants and entertainment spots in the area.
- 2-day lift ticket to Whiteface Mountain.
- 2 deluxe continental breakfasts in the inn's hospitality room.
- Saturday night dinner at Goldberries in the heart of Lake Placid. Dinner includes soup/salad bar, choice of fish, prime rib, chicken cordon bleu, and dessert.
- all ground transportation including transfers to the mountain.
- box lunch for the ride home on Sunday.
- all taxes and gratuities.

Whiteface Mountain has 11 lifts, 9 chairs: 1 quad, 1 triple, 7 doubles, 1 surface lift, and 1 high-speed 8-passenger gondola, heated cabins, with transportation from the base to top of Little Whiteface.

The mountain has 66 trails: 35% easiest, 37% more difficult, and 28% most difficult. They boast a 3,216-foot vertical drop, the *Greatest in the East!* There is a 3-1/2 mile intermediate trail from the summit.

Snowboarders are welcome on 100 percent of the mountain's terrain and there is 93 percent snowmaking coverage.

There is extreme skiing on "The Slides" if there is enough natural snow.

There's so much to do in addition to the great skiing at Whiteface. Visit the Olympic Park and try a run on the bobsled or take a luge ride. Enjoy many sightseeing tours. You can also enjoy cross-country skiing, ice skating, ice climbing, tobogganing, dog sled rides, and the latest trend, snow tubing!

Along with the many recreational opportunities the area has to offer, the nightlife is also second-to-none. There are many fine restaurants to choose from and there are also over two dozen pubs and nightclubs, offering live entertainment and dancing nightly. *Snow Country* magazine recently ranked Lake Placid as the top ski town in the eastern U.S. for nightlife.

We have space for only 40 people on this trip, so sign up at a monthly meeting or mail your first deposit of \$110 now to Beverly Murphy, 281 Great Western Road, Harwich, MA 02645 with second payment of \$112 due by November 1, 1999. Seniors over 70 should call for price.

Please note: if you cancel your trip after December 7, and I am unable to replace you, be prepared to forfeit your portion of lodging cost. Call me if you have questions, (508) 432-4473.

An Olympic ski club kinda year!

Lake Placid, Park City, Val d'Isere ... get out your medals the Cape Cod Ski Club seems to be heading to and from the Olympics!

Each resort above has hosted the Olympic Games or will be soon. Deer Valley, a must-ski for the Park City-going members, will host the 2002 Olympic slalom, mogul and aerial events. Construction is underway for a new day lodge and more chairlifts.

Lake Placid is almost synonymous with U.S. Olympic places! For the cross country skier, Lake Placid boasts miles of terrain where biathletes tested their skills twice, some 30 and 60-plus years ago.

While you're in Lake Placid, be sure to take some sight-seeing tours and visit the Olympic venues. And you can be sure with the entire world visiting, there's some great restaurants to visit.

And if you venture to Val d'Isere, France, you can forego shaving for a day or two and pretend your Alberto Tomba and race the Belvedere.

The 1992 Olympics in Albertville found the resort and growing space of Jean Claude Killy to be the perfect place for the downhill. The upgrades in lifts, accommodations, and restaurants shows their recent gold medal-winning ways.

But even if you don't venture to these three places, remember that there are plenty of great "venues" right here in New England.

For instance, this year's Winter X Games sponsored by ESPN will be held at Mount Snow. The Special Olympics have been hosted at Attitash and watch as snowboarding continues its crazy ride up the popularity ladder with events at Sugarloaf and Killington.

Oooh, just can't wait for winter!

Sunshine all year

The Cape Cod Ski Club has established a Sunshine Fund and a volunteer to oversee this fund. Dutchie Connell will be responsible or sending greetings to Club members for a myriad of reasons.

If you or someone you know who is a member of the Club has recently enjoyed the birth of a child, suffered the loss of a family member, endured an operation or other medical trauma, or needs a little "sunshine," please let Dutchie or a member of the Board know so that a note, card or appropriate gift is may be made on behalf of the Club.

Club Family Week

Sunday-Friday, February 20-25

Kids and their parents love Mt. St Anne

Last year, the Club put together a trip for families during school vacation to Mt. Sainte Anne in Quebec. The trip was a great success (with a few hitches worked out at the last minute) and the Club is offering this trip again.

It's a great family vacation while the kids are on vacation. The timeframe is selected because the youngsters in Quebec are all in school, and it's *our* school vacation week. So ...

Pack up the car, find someone to feed the fish and pick the newspaper up off the lawn, and get back to Mt. Sainte Anne!

The lodging is for five nights in one or two bedroom condos at Au Pied du Mont with full kitchen facilities. The condos are 1/4 mile from the base lodge of Mont Sainte Anne, and includes the use of the sports complex.

Meals are on your own, so pack the kids' favorite cereal and jelly! Make plans with neighbors for pot luck suppers and get rid of leftovers!

The package offers four day of skiing. And the skiing at Mt. Sainte Anne is as beautiful as it is varied. There's terrain for all levels of skier, even those extreme skiers!

The price for this trip is from \$219 to \$279 per person depending on number of bedrooms required:

- One bedroom condo (for family units of four only) \$259 per person for adults, \$210 per person for children.
- Two bedroom condo \$299 per person for adults, \$259 per person for children.

For more information and price/age breakdown, call Dennis O'Neill at (508) 255-2268.

Mail \$100 deposit now and trip reservation form to Dennis O'Neill, RMS Route 28, Orleans, MA 02653. Second \$100 deposit is due December 15 and final balances due January 25.

Don't miss out on this fun family week trip!

Bike rides winding down

There is still some great evenings left before the winter gets here to ride your bike with the gang! So, put some air in the tires and check out our schedule. On Mondays:

On even numbered days (June 14, 28 etc.) ride the Cape Cod Canal starting at the Sandwich Marina.

On odd numbered days (June 7, 21 etc.) ride the Cape Cod Rail Trail starting at Route 134 in South Dennis. Rides will continue through October 25.

Additional bike trips will soon be announced. Among them, a Sunday trip to Martha's Vineyard as well as Falmouth's Shining Sea Bike Trail, and on the lower cape, the National Seashore.

Call (508) 398-USKI or Dottie Lovely at (508) 394-0488 for more information.



Paul Richard is shown here at Otis on Lookout Hill. Call Nick Ducharme at (508) 477-3699 for weekend off-road biking. (Photo courtesy Nick Ducharme)

LION KING in New York City
Nov. 3 & 4
\$259 includes Rockettes Christmas Show tax.
Other dates also available

28 High Bank Road
S. Dennis, MA 02660
(508) 394-5739

BACON
TOUR SERVICE, INC.

COOL CLUB CLOTHES

Tee Shirt \$12 • Mock Tees \$18 • Turtleneck \$17 • Sweater \$28
Fleece Vest \$32 • Polar Fleece Jacket \$42
3-Button Sweatshirt \$24 • Side Zip Jacket \$40
Baseball Cap \$10 • Neck Wallet \$7.50

INTRODUCING THE 3-SEASON JACKET \$55 and the WOODSMAN FULL ZIP HOODED JACKET \$59

Items available at General Meetings • Great for Gifts!

ALL AIR WEEK-LONG TRIPS INVOLVE A \$50 NON-REFUNDABLE DEPOSIT

Make Copies As Necessary

TRIP / EVENT RESERVATION FORM
YOU MUST BE A CURRENT MEMBER IN GOOD STANDING TO SIGN UP FOR ANY TRIP.
Please fill in ALL information. Trip reservation indicates parties involved understand the Liability Policy printed below.

Trip _____ Date _____
Pickup site: Harwich Barnstable Sagamore

ALL AIR TRIPS INVOLVE A \$50 NONREFUNDABLE DEPOSIT.

Member Number _____
Member Name _____
For airline/ID purposes _____
Address _____

Tel. H _____ W _____
Total # tickets _____ Your Age _____
Room/Condo mate(s): _____

Guest Name/Age (include lesson/rental needs): _____

Amount Enclosed \$ _____

Make checks payable to: Cape Cod Ski Club. Mail/deliver to trip leader. No reservations accepted without a deposit. Each trip leader must receive money for that trip. No transfer of funds through treasury between trips.

In case of emergency, please notify: (someone not on bus)
Name _____
Tel # _____
Guest Emergency _____
Tel # _____

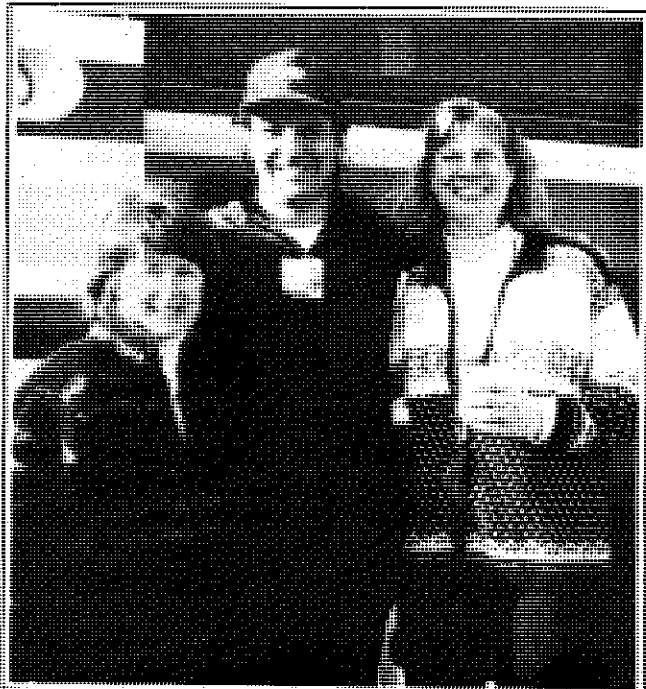
Any special/medical circumstances? _____

LIABILITY POLICY: Participants acknowledge that there are inherent risks in skiing, whitewater rafting, and other sports or events, and agree to hold harmless the Cape Cod Ski Club, its employees and agents, from any claims whatsoever resulting from participation in any Club-related activity. The Cape Cod Ski Club acts solely as agent carrying out services and assumes no responsibility or injury, loss or damage to persons or property, nor for faults or defaults of companies or those carrying out services; nor accidents, injuries, delays, cancellations, changes due to weather, baggage, lodging, insufficient participation, or reasons beyond the control of the Cape Cod Ski Club.

Tue. - Wed., March 14-15 Mini ... Sign up now, we're saving you a spot Mount Sunapee, NH, Okemo, Vt

by Dottie Lovely

Are you ready for the third year? A two day mini-escape to Vermont ... the thought of *not* having to drive to and from the mountain, spending more time traveling on the bus than we actually ski in one day. This year, I am pleased to offer you the



Gather your friends and sign up for a great mini escape! We'll do the driving ... you and your friends have a great time!

opportunity to ski at Mount Sunapee & Okemo for our two day mid-week March get-away.

The fun begins on Tuesday, March 14th, when we depart Cape Cod by bus with the first stop leaving Harwich park and ride at 4:30 A.M., followed by Barnstable commuter parking lot, leaving at 5:00 a.m. and a final stop at the Sagamore commuter lot.

Our first day of skiing will be at Mount Sunapee, NH. At day's end, we will travel to Cavendish Pointe Hotel, which is located in Ludlow, just minutes from Okemo Mountain.

This new country hotel offers seventy spacious rooms, a restaurant, lounge, and inviting living room. All rooms are carpeted, air-conditioned, and have cable television, and a full-size bath. 50 rooms feature pairs of queen-sized beds with king-size beds in the other 20.

Other amenities include a bar with entertainment, a six person hot tub, indoor swimming pool, sauna, game room which includes a pool table and video games as well as a spacious living room with fireplace.

Bring your appetite to dine in the highly acclaimed Sweet Briar Tavern. You'll be able to choose from three choices of entree. Plan to join us for after dinner fun and games, plus a few giveaways. On Wednesday morning, you'll start your day with a full buffet breakfast.

Then it's on to Okemo Mountain, located just a few minutes away. The day trippers will be rolling in to join us a bit later. A meal voucher will be provided by the mountain for us on Wednesday. Our bus will depart for home at 4:30 p.m. with a dinner stop on the way. Package includes

- bus transportation to and from Harwich, Barnstable, & Sagamore
- 2 days of skiing ... 1 day at Mount Sunapee and 1 day at Okemo
- 1 night lodging at Cavendish Point Hotel (double occupancy)
- 1 gourmet dinner at Sweet Briar Tavern
- full buffet breakfast the following morning
- lunch voucher (\$7.00 value) provided at Okemo
- all taxes and bus driver tip

We will raffle off a few things including ski goggles, provided by Okemo and other surprises on Tuesday night.

The cost is \$144 for adults and \$134 for seniors 65+. A deposit of \$75 is due by December 14, 1999. Final payment paid in full by March 1, 2000. Please note: if you should cancel your trip after February 14th, and I am unable to replace you, be prepared to forfeit your portion of lodging cost, \$42.50.

Make checks to CAPE COD SKI CLUB and mail to Dottie Lovely, 19 Captain Besse Road, South Yarmouth, MA 02664.

If you have questions, want to select your room mate, or just need more information call me at (508) 394-0488.

Friday- Sunday, March 17-19 Gettin' green at Smuggler's Notch

by Mark Lovely

Hey, all you leprechauns, get your green on and come to the end of the rainbow and find the pot of gold that is Smuggler's Notch and a weekend of skiing for mom, dad and the kids for St. Patty's Day!

If you enjoyed Smuggler's Notch just before the holidays in December, then you'll love it for this green holiday! Three days of skiing, two nights lodging, and three meals (two breakfasts and one dinner buffet) ... all for \$150 per person and special discounted prices for the wee little ones!

This is a carpool, family trip. Sleeping accommodations are double occupancy, all in slopeside condos. Everyone is welcome to use the Aqua Sports Center with a heated pool, bathhouse, and hot tub.

St. Patrick's Weekend at Smuggler's is full of fun and entertainment ... and green! Green beverages, green food, maybe even green snow! Enjoy apres ski fun with lighted ice skating and lighted snow tubing on Sir Henry's Hill and more!

Smuggler's Notch is comprised of three mountains with 60 trails and a 283-foot vertical rise, all spread across 1,000 acres with boundary-to-boundary skiing. If you brave enough, try the East's only triple black diamond!

The cost for adults is \$150, children aged 7 to 12 are \$135 and children under 6 are free with a paying adult. For information on this "green" weekend call (508) 394-8286 after 5 p.m.

Send your reservation form with condo-mates and check for \$75 per person made payable to the Cape Cod Ski Club by January 5 to Mark Lovely, 11 Lakefield Road, South Yarmouth, MA 02664. Balances are due February 18, 2000.

Big Sky equalled big snow and fun

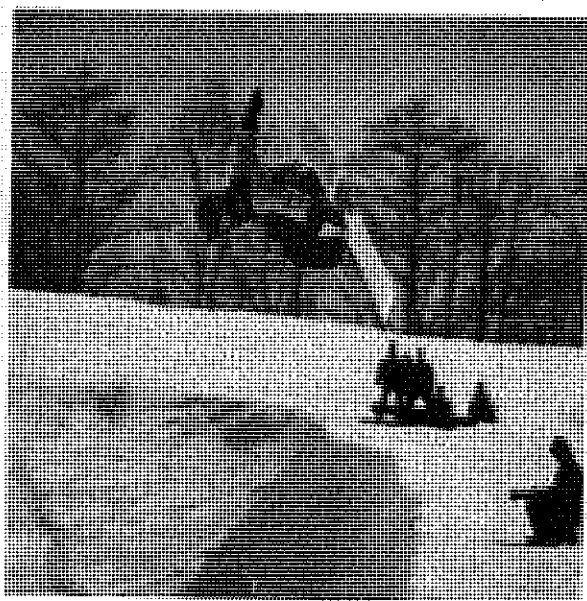
After it was all said and finally done, the small group of members who made it to Big Sky, Montana, last season enjoyed some of the best skiing of the year.

Fresh snow fell just about every night giving the fourteen members who made the trek a foot of fluffy stuff to enjoy.

The beautiful Huntley Lodge at the base of the mountain offered a hearty full breakfast each morning, sending off the skiers and boarders with a full belly. They worked hard and skied off the calories that came with omellettes and muffins!

Whip Filoon, Mary Jo Gregory and Tom Jones at the top of Big Sky enjoying the Big view!

The trip was mostly uneventful and provided a restful week for everyone. You can be the Club head to Big Sky, Montana again!



BURTON
SNOWBOARDS

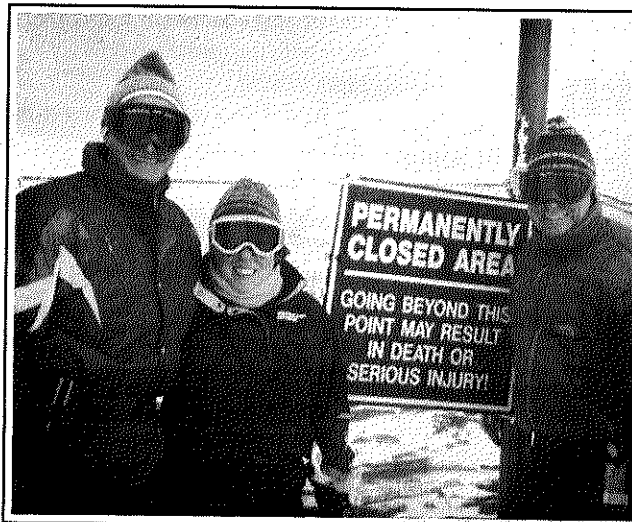
The Burton Design Team as developed, tested, and ultimately manufactured the ultimate product.

Come in and check out our line of Burton Snowboards and performance clothing for the year 2000.

Puritan of Cape Cod
Celebrating 80 years of Cape Cod Style

PURITAN
OF CAPE COD

Main Street Hyannis 775-2400 ext.212 Main Street Falmouth 548-0116
www.puritancapecod.com



Accent Eyewear by Peg

Cape Cod Ski Club member
Peg Taylor, Optician

has **SKI GOGGLES** with
Prescription and Non-Prescription
lenses built right into the faceplate!

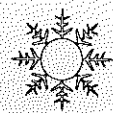
UVEX
German-made
Prescription
Goggles

Gift Certificates Available
Cape Cod Ski Club Membership Discount

**GET YOUR GOGGLES CASE!
ONLY ABOUT A DOZEN LEFT!**

South Yarmouth Shopping Plaza
Route 28 • South Yarmouth
(508) 394-4200

Mon-Fri 9 to 5 • Wed til 6:30
Please call for ski goggle fitting appointment.



Visit us on the web at
www.capecodskiclub.com

Club Week, Sunday - Friday, January 23 - 28

Ski yourself silly at Sunday River

by Rose Medeiros

Leave the Cape early enough on Sunday morning, and you'll get in a half day skiing at Sunday River then it's five more days of skiing with no crowds, no lines, no waiting!

Join us again as we head to Sunday River, Maine, on this carpool trip. We'll be staying in slopeside condos, so park your car and don't get in it again until Friday! The \$285 package price includes accommodations, 5-1/2 day lift ticket, wine and cheese get-together, outdoor heated pool, and the world famous Pot Luck Supper.

The North Peak condos offer two bedrooms for four people (double occupancy) and have complete kitchens for preparing gourmet dinners, stopping in for lunch, and a hearty breakfast. Get with your buddies and plan a weeklong menu!

Or if you don't feel like cooking, pop on your skis and schoosh on down to the lodge for breakfast and wait for the lifts to open! Nearby Bethel, Maine, certainly affords the opportunity for fine dining or local pub fare. And there's plenty of entertainment around, too! Visit the Sunday River Brewing Company for live entertainment, not to mention the local ale; or head to Suds Pub for some great local talent and dancing.

Mail \$100 deposit and trip reservation form now to Rose Medeiros, 1519 Newtown Road, Cotuit, MA 02635. Then mail second \$100 deposit by November 15, and final \$85 balance by December 20, 1999.

If you have questions or need carpool information, call me at (508) 428-5378.

Kayaking ... or the long and short of it

by Anne MacAdam

On Tuesday, August 24, we launched a fleet of ten boats from Wilbur Park on Bass River and went well beyond the Route 28 bridge, a good 5 miles out and back, stopping for our break at the Windmill, in sight of the sound.

Cheryl Doran provided beer and sandwiches for the whole crowd, hauling the spread in a canoe with help from a friend paddling up front.

Once again, it was *painfully* clear that the short-boats really struggle trying to keep up, and the long-boats spend a lot of time waiting for them.

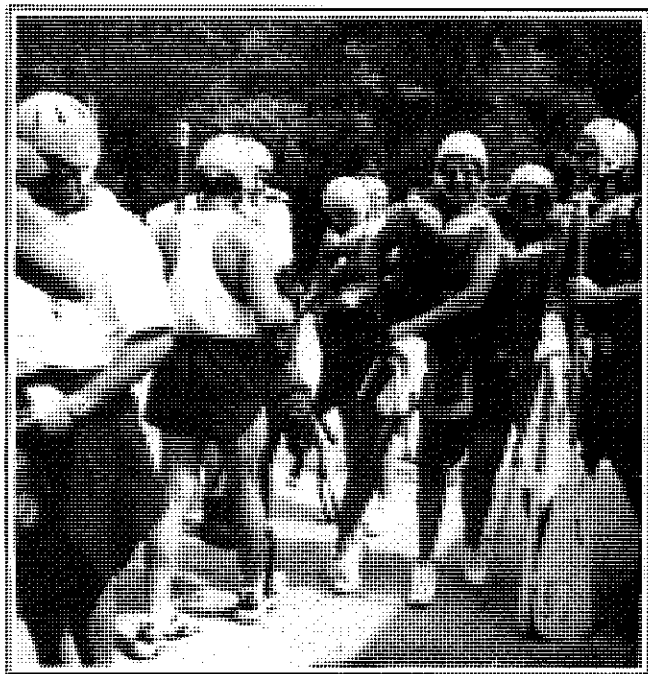
So, we have all decided to split the group so that the longer touring boats can go their distance, and the puddle-jumpers can poke along and smell the roses.

It all worked much better on Monday, August 30, when we launched at Meeting House Pond in East Orleans and wandered down toward the headwaters of Pleasant Bay, exploring the streams and inlets along the way and chasing the Kingfishers back into Lonie's Pond. This was undoubtedly our most beautiful evening excursion to date and was crowned with a spectacular sunset.

Of course, the evenings are quickly becoming *much* too short, so we skipped the Beach-Break and the Gnat-Snack and went for pizza afterwards instead.

Evenings during the week will shortly have to yield to weekend events; but we'll try to continue weekly trips until the water gets hard. Still time to join us. Call me (508) 487-3982.

And, then there's the white water!



Staci Cormier, center, and her sister and brother-in-law, Kelly and Adam, were on the white water trip to the Deerfield River in Charlemont, Mass., on August 1. Just over twenty members and friends made the great adventure. Tune in next month for the story!



Janet Byrne, Kevin Wentworth and Richard Falvey are lined up on the slope at Wildcat at last year's mini escape. Sign up now before the bus fills up!

This is your 2nd to last newsletter of the 1998-1999 season. You must be a 1999-2000 card-totin' member to get newsletters after October.

Back to Attitash, Red Jacket, and Wildcat

Join the Club on another great mini escape to Attitash and Wildcat, with an overnight stay at the Red Jacket in North Conway. This was a wonderful trip last year with an entire day of snow on Tuesday, and "interesting" skiing at Wildcat on Wednesday. Even the day trippers thought so!

The Red Jacket is exquisite with beautifully decorated rooms, indoor pool, scenic views, and outstanding food! The dinner buffet was tremendous last year, as was the dessert table! Breakfast was no exception and offered omelettes cooked to order.

This \$156 package (seniors (\$154) includes bus transportation, leaving Tuesday morning from Harwich at 4:30 a.m., Barnstable at 5 a.m., and Sagamore at 5:15 a.m., one day skiing each at Attitash and Wildcat, one night's stay at the Red Jacket, three-course dinner in the Champney Dining Room, breakfast Wednesday morning, and all taxes and gratuities.

Last year's trip saw Patti Higgins and Milo Fischer enjoy cross country skiing at Attitash on Tuesday and in Jackson on Wednesday, so if you're not a downhill skier or rider, there's plenty of skiing for you too! Please note on reservation form if you'll be cross country skiing either day.

Last year also saw Peg Taylor break her ankle. Thankfully, Peg has healed nicely and should be back on the boards soon. The caring and help by fellow club members was tremendous, especially Laura Roberts, who drove over from Vermont to join us, who took Peg to the hospital and waited while x-rays were taken and a cast put on.

The mini escapes are becoming more and more popular, so don't miss your chance to get on one! Mail your \$75 deposit made payable to the Cape Cod Ski Club and reservation form with roommate request by November 15 to Bob and Charlotte Montbach, 720 Main Street, Chatham, MA 02633 and final balance by January 15, 2000.

ALL AIR WEEK-LONG TRIPS INVOLVE A \$50 NON-REFUNDABLE DEPOSIT

Make Copies As Necessary

TRIP / EVENT RESERVATION FORM
YOU MUST BE A CURRENT MEMBER IN GOOD STANDING TO SIGN UP FOR ANY TRIP.

Please fill in ALL information. Trip reservation indicates parties involved understand the Liability Policy printed below.

Trip _____ Date _____

Pickup site: Harwich Barnstable Sagamore

ALL AIR TRIPS INVOLVE A
\$50 NONREFUNDABLE DEPOSIT.

Member Number _____

Member Name _____

For airline/ID purposes _____

Address _____

Tel. H _____ W _____

Total # tickets _____ Your Age _____

Room/Condo mate(s): _____

Guest Name/Age (include lesson/rental needs): _____

Amount Enclosed \$ _____

Make checks payable to: Cape Cod Ski Club. Mail/deliver to trip leader. No reservations accepted without a deposit. Each trip leader must receive money for that trip. No transfer of funds through treasury between trips.

In case of emergency, please notify: (someone not on bus)

Name _____

Tel # _____

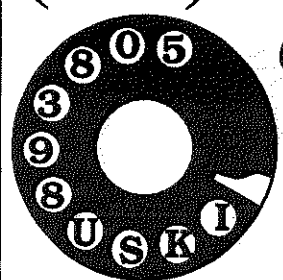
Guest Emergency _____

Tel # _____

Any special/medical circumstances? _____

LIABILITY POLICY: Participants acknowledge that there are inherent risks in skiing, whitewater rafting, and other sports or events, and agree to hold harmless the Cape Cod Ski Club, its employees and agents, from any claims whatsoever resulting from participation in any Club-related activity. The Cape Cod Ski Club acts solely as agent carrying out services and assumes no responsibility or injury, loss or damage to persons or property, nor for faults or defaults of companies or those carrying out services; nor accidents, injuries, delays, cancellations, changes due to weather, baggage, lodging, insufficient participation, or reasons beyond the control of the Cape Cod Ski Club.

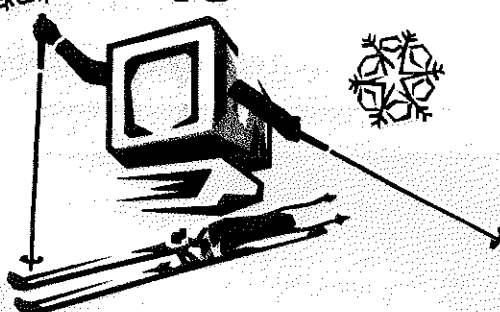
(508) 398-USKI



Call the Club
Hotline
... Updates
& info!

Get your snow reports
on-line with a computer from

Computers &
Performance
Upgrades



Sales Service Repairs
508-888-7998

331 Cotuit Road - Suite 34 - Canterbury Plaza
Sandwich, MA 02563
Ken Taylor - Ski Club Member

Mini, Tue.-Wed., January 11-12

Same Indian Head mini, new leader

by Gina Schuh

First, let me tell you who I am. Most of you might know me as Gina Sullivan. I've been in the club for six years now, and have assisted Pauline Judge on the mini escape in the past.

Now that you're busy wracking your brain trying to figure out who I am, let's get your fingers busy writing out those deposits for great ski trips this year!

Seven years and going strong! The January mini escape is just around the corner! This year, we'll visit our friends at Waterville Valley on Tuesday, January 11 then head to the Indian Head Resort where they'll wine and dine us, then it's off to Loon on Wednesday.

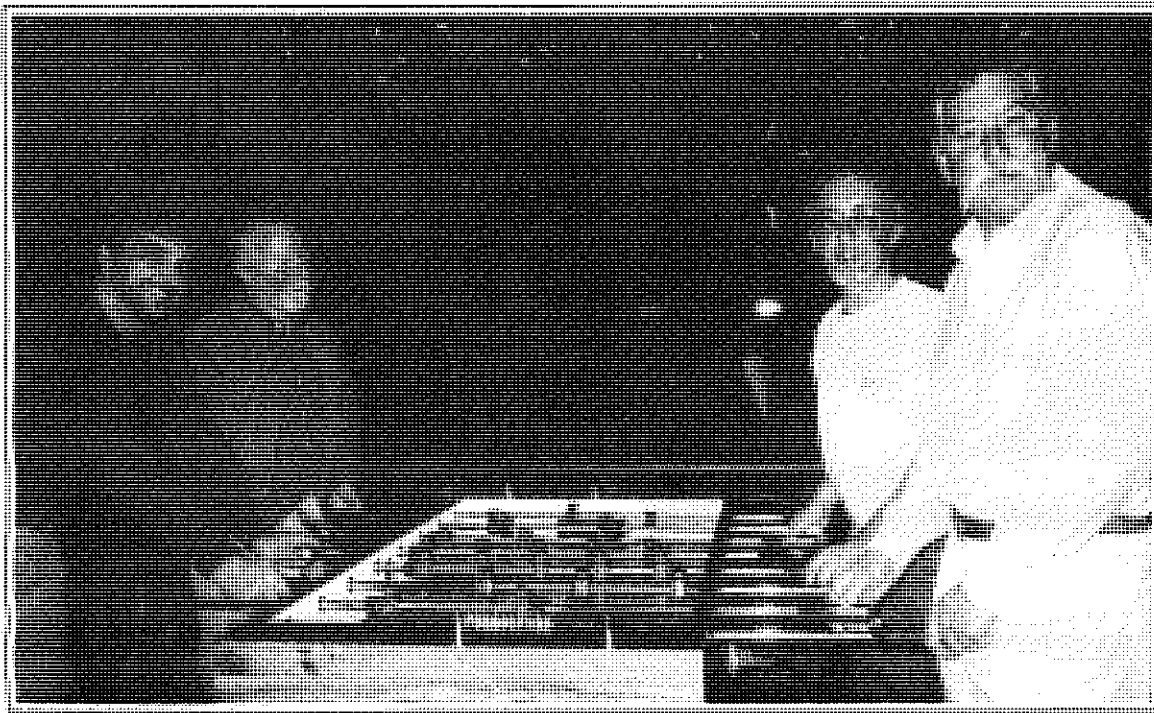
The cost is \$152 as we set out on another great ski value mini vacation. The trip includes all transportation and bus driver tips, 1 day lift ticket each at Waterville Valley and Loon, 1 night at the Indian Head Resort (double occupancy), dinner and wine/beer and cheese reception on Tuesday night,

breakfast on Wednesday, and box lunch for Wednesday.

The Indian Head Resort has a wonderful outdoor jacuzzi, plenty of room for you and 15 or so of your closest friends, an indoor heated pool and jacuzzi, game room, lounge with dancing, music, pool tables and foosball.

We'll leave just like a day trip on Tuesday from Harwich at 4:30 a.m., Barnstable at 5 a.m. and Sagamore at 5:15 a.m. The bus will leave Waterville Valley at 4:30 p.m. on Tuesday for the short ride to the Indian Head. Then, after breakfast on Wednesday, we'll head out at 8:15 a.m. for Loon, meeting up with the day trip members. The bus will leave Loon at 4:30 p.m. after another great day of skiing.

Mail your \$76 deposit made payable to Cape Cod Ski Club and reservation form with roomie request by November 5, 1999 to P.O. Box Dennisport, MA 02639. Balance is by December 30. Seniors call for balance due.



Bob Turc, Rick Southorn, Scott Marchant and Dick Whitman go head-to-head at foosball. The Indian Head Resort offers pool too, the water kind and the green felt kind!

Sat. - Sat., February 12-19 Park City, Utah and so much more!

If you've heard amazing stories about Utah's incredible snow ... believe them. Better yet, come join the Cape Cod Ski Club and try it for yourself. It truly is "The Greatest Snow on Earth!"

Cruise the trails with a 2 out of 7 day Park City ski pass. Plus a 1 day Canyon ski pass. Whether it is long cruisers, steep



Meet Terri and Roland Jennex, your hosts and trip leaders for Park City, Utah. Call them or just mail your trip reservation form today! (Photo from banquet courtesy Kevin Wentworth)

mogul runs, gladed powder skiing, natural half pipes, or above tree line bowl skiing you can have it all here in Utah!

This trip costs \$1,079 and includes the following:

- 7 nights, 4 person condos in the Park Ave Condos:
- 2.5 baths
- fully equipped kitchen
- outdoor heated pool
- indoor hot tubs, sauna and changing facilities
- laundry room
- short 2-3-blocks to Park City Mountain Resort
- welcome reception
- round trip airport and hotel transfers
- round trip Cape Cod to Logan transfers
- all ground transfer tips
- 2 out of 7 day Park City ski pass
- 1 day Canyons ski pass
- all taxes and service charges

Departure on Saturday morning, February 12th begins at Harwich/exit 10 commuter parking lot a 8:15 a.m.; from Barnstable/BurgerKing commuter parking lot at 8:45 a.m.; from Sagamore commuter parking lot at 9 a.m.

The plane departs Logan at 11:20 a.m.; transfer in St. Louis departing at 2:10 p.m.; arrive Salt Lake at 4:14 p.m.

Saturday, February 19th the plan departs from Salt Lake at 8:15 a.m. with an arrival time in Boston at 4:30 p.m. and returning to Cape Cod at approximately 6:00 p.m.

Schedule for deposit payments is as follows:

- \$359 Now
- \$360 by September 15, 1999
- \$360 by December 1, 1999

Mail completed trip form with roommate request and check or money order made payable to Cape Cod Ski Club to trip leader; Roland Jennex, 33 Payson Path, West Yarmouth, MA 02673. Call Roland or co-trip leader Terri for information at (508) 394-3320.

Cancellation insurance available soon

Highly recommended and very affordable is trip cancellation insurance. Under certain circumstances, travelers can receive almost the entire amount of monies sent in for a trip.

Some commonly asked questions regarding "vacation insurance" are as follows:

What if I have to cancel my reservation? If you must cancel for any of the reason stated in the insurance policy, (the main ones are sudden illness, accident or death occurring to you, a member of your immediate family (specifically defined in policy) or a travelling companion; jury duty; job transfer; fire at your residence) then you are covered up to the amount insured

for cancellation charges assessed by your tour operator.

Are pre-existing medical conditions covered? No, not if they required treatment or the use of medication during the 60-day period prior to purchase of the insurance.

The cost of insurance is based the cost of the trip (a percentage). Your cancelling out of a trip is not the only coverage provided. Missed flights, emergency medical care, trip interruption and baggage/sports gear delay and/or loss is also provided.

If you are traveling on a trip with the Cape Cod Ski Club this winter and decide to purchase travel insurance, please contact the trip leader. Forms will be available soon for this valuable insurance. This insurance is highly recommended, whether you travel with the Club or not! No one can foresee the future, so insure against it ruining your vacation in the form of lost monies.

The tour operator is working out the final details and printing of brochure material that will specifically list all coverage provided.

This is your 2nd to last newsletter of the 1998-1999 season. You must be a 1999-2000 card-totin' member to get newsletters after October.



**Lean
For
Life**

**Get in the Zone with Joan
Certified Zone Instructor**

Benefits include:

- Increased energy levels
- Loss of carbohydrate cravings
- Peak mental focus
- Loss of body fat at the fastest possible rate

Call for details

Optimal Health Connection

305 Hokum Rock Road, East Dennis, MA
508-385-3285

**Look us up on the web
at www.capecodskiclub.com
or email us at
downhill@capecodskiclub.com**

The following information, although lengthy, is very important in the process that makes for a successful trip with the Cape Cod Ski Club.

Whether you're going for a day, two days, three days or a week, there are certain processes that will ensure that you are signed up properly for a trip. Members, long-standing and new, should read this information and practice what it preaches.

Rip out this page because on the other side is the Cape Cod Ski Club trip year at a glance calendar. Tape it to your refrigerator so you won't miss any of the fun! If you have questions about signing up, this information is on the other side.

The paperwork

Signing up for a ski trip with the Cape Cod Ski Club is really quite painless and easy. You only have to follow these easy instructions.

- Decide which trips you are going to go on.
- Clip the trip reservation form in the newsletter, pick one up at the general meeting or make copies as needed.
- Fill out ALL the information on the form to include age (which may decide what your lift ticket price, 65+ or 12 and under may cost different at mountains). Be sure to note if rentals or lessons are needed. Please note bus pickup location.
- Fill in the emergency information. Someone not on the trip should be listed. God forbid a lift or bus accident where both you and the person you listed to notify in case of emergency are injured. List guest emergency information also.
- For day trips, make check or money order payable to the Cape Cod Ski Club for \$15 (member or family) or \$20 for guest (not family, over 21 years old) towards the bus. If you use a voucher, send it along with the trip form and the balance for the bus. You will be called *only* if you are on the waiting list. Otherwise, assume that you are going on the trip.
- Mail check and form to the trip leader as soon as possible.

Don't forget to set the alarm! There's the bus! Now what?

Now that you've signed up properly, dotted all the I's and crossed all the T's, it's time to get ready for the big trip. Follow these common sense tips that will make your trip less stressful . . .

- Leave home in the morning with plenty of time to spare. A speeding ticket may cost you a day of skiing. Leave time to scrape off the windshield and warm up the car.
- Lock your car in the parking lot and don't leave any valuables in it. No one but you is responsible in case something is stolen. Also, the Club nor the parking area is responsible for damage to your vehicle.
- Pack lunch (a great money saver), ski wear, boots, skis and everything else you'll need the night before. See elsewhere on this page for *what* to pack and *where* to pack it!
- Leave everything right by the door so you'll remember it all. If your lunch is in the fridge, tape a note over the doorknob as a reminder.
- Buses depart **promptly** from Exit 10 Park & Ride at 4:30 a.m.; Route 132 Burger King/commuter parking lot at 5 a.m.; and the Sagamore parking lot at 5:15 a.m. We ride *Plymouth & Brockton* buses. If you are on the bus with a lot of suits and briefcases, you are on the wrong bus!
- Stow skis and anything you won't need on the ride under the bus. Store boots under your seat. You may want to bring lunch/beverages in the bus.

On the road

There seems to be an unwritten philosophy about the buses. Generally speaking, the first bus is the quieter bus, and the front of the bus is quieter. Basically, rowdies to the rear please! Please be courteous to our riders in Sagamore. They like to sit together too! Save seats if possible. Anyway, the bus just pulled out of the parking lot . . .

- Donuts and muffins will be passed out around 7:30 or 8 a.m. The plan is 1-1/2 per person; so please take only one, then, see what's left after the box has made the trip around the bus. Sorry, BYOC (Bring Your Own Coffee!) No smoking on the bus. Please wear headphones with your Walkman.
- The bus *may* make a stop which is for the bus driver's relief only. No one is permitted to get off the bus. There is a toilet on the bus for passengers' use.
- The trip leader will collect any monies due for lift tickets, lessons, rentals, etc., en route. Have exact cash if possible, or check made payable to the Cape Cod Ski Club.
- Unless you're renting equipment or taking an early lesson (trip leader will assist with this), you must **stay on the bus until the trip leader returns with tickets**. Be patient while waiting. Someone will be asked to volunteer to unload the skis. You, in the

Everything
you ever
wanted to
know about
skiing with the
Club, but were
afraid to ask

meantime, can clean up your area on the bus, throw away the napkins the trip leader hopefully remembered to grab at the donut store, get your gear ready to go, even get dressed if you can.

- When the trip leader returns, you will be given your ticket as you leave the bus. Put the ticket in your pocket or someplace where you won't lose it. When you get into the lodge, put the ticket on your jacket. Often it's so cold outside that the tickets don't stick as securely as possible.
- From there you are on your own. However, we urge you to ski with a friend or new acquaintance. Make lunch plans, ride the first lift with a fellow club member.
- Be sure to ski with identification. If you are injured tell the Ski Patrol to contact the Cape Cod Ski Club on the mountain. The trip leader asks to make sure that no one has checked in for the day!

On the road again

- The bus leaves the mountain promptly at 4:30 p.m. Unless told otherwise, it will be parked where it was in the morning. Don't be late for the bus ride home. You may be the recipient of the hoots and hollers of your fellow members! (A sure way to make new acquaintances!) Please take your same seat on the bus for the ride home.
- Depending on where you get the bus, stow your equipment in the correct bay under the bus. Ask the driver which bays are for which stops. This will insure your equipment isn't off-loaded at the wrong stop and left behind. The parking lot will be just as lonely tonight as it was 200 years ago.
- A *quick* dinner stop will be made on the way home. And only one stop will be made. If you plan on indulging in beverages on the trip home, bring them with you. The bus will not stop for dinner *and* drinks.
- When you get off the bus at your stop, make sure you take *all* your equipment and *only* your equipment. If you are one of the last to leave the parking lot, take a quick look around to see if there is any equipment left behind.

Some more trivial, but useful info

When you sign up for a trip, remember that the more information the trip leader knows, the easier and more smooth the buying process is at the mountain. If you or anyone in your group needs rentals, lessons, or learn-to-ski packages, note this on the trip reservation form.

Don't call to see if there is room, just send the money and form! A minimum of 30 people must have paid their bus money in order to get a bus; 77 to get a second bus.

If you cancel your day trip at least one week (that's 7 days, folks) prior, you can get a refund (your check will be torn in half, money orders and cash returned). Cancellation after then results in forfeiture of money if your seat can't be filled on the bus (from a waiting list). If you know you have to cancel, don't wait until the last minute. This can prevent others from being called in time to fill vacant spots on the bus. Longer trips have varying dates for cancellation; see the trip leader.

When you get on the bus, put your dibs in for your seat with a cooler, your boots, the newspaper, a Thermos or yourself! Once the bus pulls out of the lot go to sleep if you want. If you bring a book or newspaper, you can turn on *your* overhead light. Be sure to bring earphones for your Walkman!

Put your money where your mouth is! Just send in your bus deposit and reservation form to the Trip Leader. Don't call to see if there is room . . . make room by signing up as soon as possible!

Upon arrival at the mountain, you must stay on the bus. Volunteers will be asked to unload equipment (usually a great job for smokers!) This prevents *bad guys* from heisting tickets outside the bus who aren't on the trip. People see buses pull in to the parking lot and they envision a day of skiing at a group's expense. It's happened before; don't let it happen to you.

While you are on the bus, the trip leader is in the sales office with other group leaders, all jockeying for space and to be waited on next. Large amounts of money changes hands and tickets are counted and recounted. Make use of the time on the bus by cleaning up your area — trash, etc. — change into your ski clothes if you can, stretch . . . relax!

Most often a representative from the mountain will get onto the bus and tell you the temperature, what's open or closed, conditions, etc. They will probably also have wickets and trail maps. Ask any questions you may have about the mountain now.

The bus leaves at 4:30 p.m. Please take the same seat for the return trip as the trip up. This makes it easier to see if anyone is missing. Look to see who is sitting next to you and if they are missing at the end of the day!

Now you can stow your boots under the bus. They will certainly be thawed out in time for your next trip with the Cape Cod Ski Club!

Basic needs for a fun experience

Whether you're going for a day, a weekend or an entire week, there are some basics that will help to make sure your trip is a success. Certainly, every skier is different and your list of ski necessities may vary — but this checklist is a great place to start!

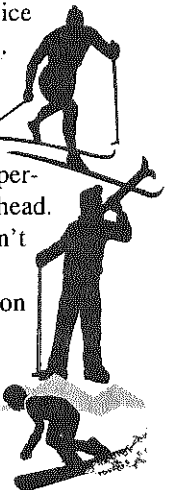
- Ski boots stuffed with goggles or socks or ski mittens or anything that will save space.
- Poles, taped or rubber-banded together for easy handling.
- Skis, either taped or banded together. If you have a ski bag, use it and be sure to make sure your name is on the bag. You can stow poles in there too with some maneuvering.
- Goggles — you never know if it's going to snow!
- Sunglasses — you never know if it's going to be sunny!
- Gloves or mittens. A skiing must! Fingers get frostbite easily. Liners are also a great idea!
- Socks, liners. Wear one pair for the bus ride, change into dry, clean socks for skiing.
- Rain gear — you never know if it's going to rain! But not a plastic bag! As it rains, the snow can turn to ice and if you fall wearing a plastic bag, well . . .
- Kerchief, fog cloth.
- Insulated underwear for obvious reasons. Those chairlift seats can get mighty cold!
- Hat. Another must for skiing. Almost 90 percent of your body heat is lost through the head. And on really cold days, some ski areas won't even let you on the lift without a hat.
- Neck warmer/neckup. The greatest invention since the hot air popcorn popper!
- Cold-weather mask or scarf. Covering up your face, cheeks, and nose will make a world of difference as the wind picks up while you head down the slopes.
- Hand and foot warmers. Another great invention! Small packets that create heat in mittens and boots. No bigger than a tea bag, they fit *wherever* you put them.
- Sun block cream and/or chapstick. The reflection of the sun off the snow will give you a sunburn. You don't realize how much sun you get because you are cold.
- Identification. Always ski with some type of ID.

Weekend and weeklong trips

- Soft luggage packs and stows easier than hard luggage. On a bus trip or in the car pool, space is at a premium and the less space your stuff takes the better. Samsonite must have never been skiing!
- Some smaller items can fit into your ski bag to save space.
- Bathing suit. There's nothing like a sauna or whirlpool after you've torn up the mountainside.
- Neck wallet, money pouch, zipped pocket.
- Skis and poles must be stored in a bag for air trips.
- Butt pack or small knapsack that you can take on the slope.
- Money to put in your around-the-neck money pouch.
- Camera and film. Send those photos to the newsletter!
- Travel alarm clock. Most mountains offer a wake-up call services, but, there's no snooze button on the phone!)

Got any other ideas?

If you have some helpful hints about skiing experiences and traveling, let us know so we can share them with Club members. We hope this information is useful and that you will put some of these tried and true hints to good use. *We ski!*



Cape Cod Ski Club... fun all winter long!

S	M	T	W DEC 1 Mystery Trip	T 2	F 3	S 4
5	6	7	8 Mystery	9	10	11
12	13	14	15 Stratton	16	17	18
19	20	21	22	23	24	25
26	27	28	29	30	31	JAN 1
2	3	4	5 Okemo	6	7	8
9	10	11	12 Loon	13	14	15
16	17	18	19 Wildcat	20	21	22
23	24	25	26 Sunday River	27	28	29
30	31	1	2 Killington	3	4	5
6	7	8	9 Wildcat	10	11	12
13	14	15	16 Pico	17	18	19
20	21	22	23 Attitash	24	25	26
27	28	29	1 Cannon	2	3	4
5	6	7	8 Killington	9	10	11
12	13	14	15 Okemo	16	17	18
19	20	21	22 Thank You	23	24	25
26	27	28	29 Sugarbush	30	31	1

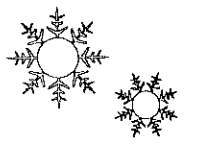
Day	Date	Destination	F/G	A	J	S	XC
Wed	Dec 1	Mystery	G	?	X	?	?
Wed	Dec 8	Mystery	G	?	X	?	?
Wed	Dec 15	Stratton		\$30	X	\$26	
Sun	Jan 2	Bretton Woods	F				
Wed	Jan 5	Okemo		\$33	X	\$24	
Sun	Jan 9	Killington	F	\$44			
Wed	Jan 12	Loon		\$24	X		Y
Sun	Jan 16	Sunday River	F	\$34	\$23	\$23	Y
Wed	Jan 19	Wildcat		\$19.50	X	\$19.50	Y
Sun	Jan 23	Cannon	F				
Wed	Jan 26	Sunday River		\$29	X	\$20	Y
Sun	Jan 30	Waterville	F	\$40	\$30		Y
Wed	Feb 2	Killington		\$40			
Sun	Feb 6	Okemo	F	\$33	\$24	\$24	
Wed	Feb 9	Wildcat		\$19.50		\$19.50	Y
Sun	Feb 13	Stratton	F	\$38	\$26	\$23	
Wed	Feb 16	Pico		\$22	X	\$16	
Sun	Feb 20	Killington	F	\$44	\$37	\$29	
Wed	Feb 23	Attitash	F	\$39	\$29	\$20	Y
Sun	Feb 27	Sugarbush	F	\$42	\$37	\$27	
Wed	Mar 1	Cannon		\$35	X	\$27	
Sun	Mar 5	Shawnee Peak	F	\$35	\$23	\$23	
Wed	Mar 8	Killington		\$40	\$34	\$26	
Sun	Mar 12	Wildcat	F	\$35	\$20		Y
Wed	Mar 15	Okemo		\$26	X	\$19	
Sun	Mar 19	Loon	F	\$34	\$34	\$27	Y
Wed	Mar 22	THANK YOU TRIP ... VOLUNTEERS OR TRIP LEADERS					
Sun	Mar 26	Attitash	F	\$39	\$29	\$20	Y
Wed	Mar 29	Sugarbush		\$22	X	\$22	
Wed	Apr 5	Mystery					

F = Family G = Guest (age 21 & over) \$A = Adult price \$J = Junior Price \$S = Senior price
 X = Not applicable XC Y = Cross country skiing available. Call for price information.
 All prices, dates subject to change/correction.
 Rates and ages for juniors and seniors varies from mountain to mountain. Be sure to list ages on reservation form. For information regarding group lessons and rentals, please call the trip leader. Please list as much information, i.e., lessons, rentals, as possible on reservation form which will make reservations and accounting at the mountqain easier and faster for the trip leader.

Day	Date	Destination	F/G	A	J	S	XC
Fri-Sun	Dec 10-12	Smuggler's Notch, VT \$135/\$150					
Fri-Sun	Dec 10-12	Sugarloaf Women's Weekend \$188					
Fri-Sun	Jan 7-9	Lake Placid, NY \$222					
Tue-Wed	Jan 11-12	Waterville/Indian Head/Loon, NH \$152					
Wed-Fri	Jan 19-21	Sugarloaf Midi, ME \$205					
Sun-Fri	Jan 23-28	Sunday River Week, ME \$285					
Sat-Sat	Jan 29-Feb 5	Aspen, CO \$1,279					
Tue-Wed	Feb 8-9	Attitash/Red Jacket/Wildcat, NH \$156					
Sat-Sat	Feb 12-19	Park City, UT \$1,079					
Sun-Fri	Feb 14-19	Mont Sainte Anne, QU \$219/\$279					
Sun-Fri	Feb 27-Mar 3	Sugarloaf, ME \$275					
Sun-Fri	Mar 5-10	Killington, VT					
Tue-Wed	Mar 14-15	Sunapee/Cavendish/Okemo \$144					
Fri-Sun	Mar 17-19	Smuggler's Notch, VT \$135/\$150					
Fri-Sun	Mar 24-Apr 2	Val d'Isere, France \$1,549					
Fri-Sun	Apr 7-9	Sugarloaf Reggae Weekend \$267					

Guests may join a paying member only on a weekend trip for an additional \$20. This money is non-refundable and does not apply to membership dues. See story recaps for deposits, payments and what is included in package.

Next month complete year-at-a-glance calendar!



A magnifique Club destination

by Pauline Judge

A most extraordinary opportunity was afforded me by the Club Travel Committee and the folks at Target Sport Adventures: the chance to run this trip to Val d'Isere, France, and a visit to the resort to check everything out! How could I refuse!?

It was my first trip to Europe to ski, let alone to visit. The check in at Logan was a breeze at night. Bring your favorite book or some cards to play with your seatmate ... it's a long ride. Better yet, try to go right to sleep. We leave here at 7 p.m. our time, and get to the resort at 3 p.m. *their* time. You'll be plenty tired.

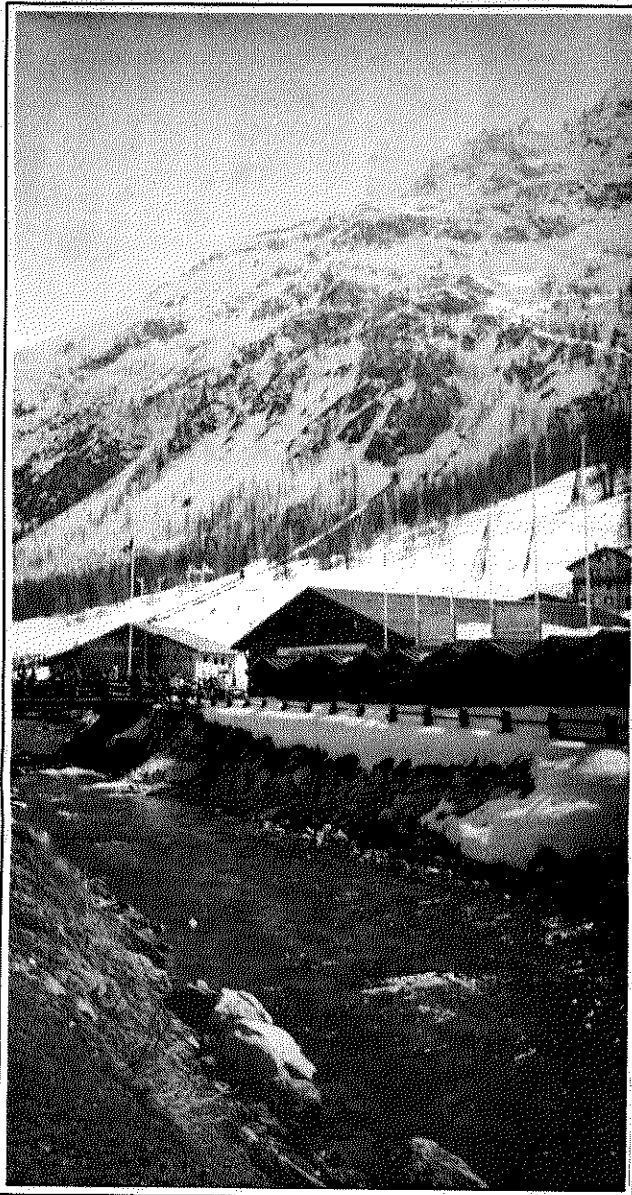
The bus ride to Val d'Isere from Geneva is about 2-1/2 hours. It's beautiful countryside, sporting houses of stone and wood. There are gardens, rivers and mountains. Once you get up into the mountains, the drive becomes a double black diamond! The weak of heart should side on the driver's side of the bus. After miles of switchbacks and mountain tunnels, you arrive at the resort. It has one main road and everything's on it: pubs, restaurants, movie theater, laundry, grocery store.

Our hotel, Hotel Grand Paradis, is just off the main road and is as close to the lifts as you can get without sleeping on them. Rooms are double occupancy and look out on the mountain's *face de Belvedere* trail, the famous 1992 Albertville

Olympics men's downhill venue. Just pretend your Alberto Tomba or the area's most famous son, Jean-Claude Killy, and cruise the 3-kilometer, 63% grade slope. It's a must-ski.

Val d'Isere and Tignes, the area just south, collectively known as "Espace Killy," boasts 100 lifts servicing the 21 easy, 66 medium difficulty, 34 difficult and 14 most difficult trails. Obviously, Val d'Isere is for the cruising skier and snowboarder with just a touch of difficulty mixed in. I'm afraid the extreme, off-the-edge skiers won't be satisfied with Val d'Isere.

It's almost all glacier skiing with 360-degree breathtaking views including Mont Blanc to the north. The lifts are swift, almost all had foot rests (a personal favorite) and I never encountered the "rude Europeans" you sometimes here about in the lift line ... the few lines I encountered. More next month.



The funiculaire, train, starts off in La Daille just southwest of the main resort area. The train travels through the mountain and takes you to the top of Rochere de Belvedere in just 14 minutes.

Speaking of passports

The passport process takes about four weeks, so plan accordingly. The U.S. Post Offices on the Main Streets of Hyannis, Falmouth and Orleans process passports:

- Hyannis, 385 Main Street, 02601, (508) 775-1177, Monday through Friday, 10 a.m. to 4 p.m.
- Falmouth, 120 Main Street, 02540, (508) 548-1071, Monday through Friday, 9 a.m. to 2 p.m.
- Orleans, 56 Main Street, 02653, (508) 255-0458, Monday through Friday, 8:30 a.m. to 4 p.m.

The cost is \$60 payable in check or money order. You can write to the post office in advance and have the paperwork sent to you, or fill it out at the post office. Any postal clerk can process an application. You need to bring the following items with you, along with the completed passport application:

- a birth certificate with an embossed seal, date of birth, and date recorded (this is a must on the birth certificate)
- two pictures taken by a passport photographer (see below)
- one other picture identification (driver's license, etc.)

The following are just a few shops in the Hyannis, Falmouth and Orleans areas who take passport pictures and provide you with the two you need:

- AR1 Hour Photo in the Airport Shopping Plaza, Route 28, Hyannis, (508) 771-9595, charge is \$7.35
- Cape Cod Photo & Art, Mashpee Commons (next to Blockbuster video), (508) 477-2225, charge is \$10.00
- Focal Point Studio, Post Office Square, Orleans, (508) 255-6617, charge is \$16

When dressing for your passport photo, be sure to wear a top that has no writing on it, i.e., logos,

Passports are good for 10 years, so make sure you smile.

Just a few words on signing up for ski trips

The Cape Cod Ski Club membership year runs from June 1 through May 31. As a courtesy (and to save on postage) the newsletter is mailed to you via your membership through October. Your membership does not run until October.

You MUST be a 1999-2000 member to sign up for any Cape Cod Ski Club ski trip for the coming season.

Trip leaders each receive the most current membership listing and will verify names before confirming your participation on a trip.

Mail membership form and a check payable to the Cape Cod Ski Club to P.O. Box 146, Hyannis, MA 02601.

Mail your trip reservation form and deposit check to the appropriate trip leader. The membership chairman WILL NOT be able to process your deposit for trips and will return any paperwork/monies to you. This will delay your getting signed up on the trip.

TRIPS ARE SOLD AS PACKAGED/DESCRIBED, i.e., if you are not taking the bus to the airport, you will NOT be refunded that money. Trips are based on a particular number of participants with pricing based on that number.

Week, Fri.- Sun., March 24 - April 2 Oui, space available Val d'Isere, France

by Pauline Judge

This former Olympic downhill site is a great Club destination. It offers skiing and snowboarding for the turning enthusiast who enjoys long cruising trails and the opportunity to get the entire day in at the "office" ... skiing 9 to 5.

This trip costs \$1,549 and includes the following:

- 7 nights, double occupancy, Hotel Grand Paradis
- slopeside / across the street from lifts
- continental-style breakfast daily
- gourmet dinner daily
- round trip airport and hotel transfers
- round trip Cape Cod to Logan transfers
- all ground transfer tips
- 6-day consecutive ski pass
- lift cancellation insurance
- use of the sports complex with pool
- 1 nights stay, double occupancy in Geneva before departure
- breakfast following morning
- all taxes and service charges

Departs on Friday afternoon from Harwich/Exit 10 commuter parking lot at 3 p.m.; from Barnstable/Burger King commuter parking lot at 3:30 p.m.; from Sagamore commuter parking lot at 3:45 p.m. Departs Logan at 6:50 p.m.; transfer in Zurich departing at 9:30 a.m.; arrive Geneva at 10:15 a.m. and the resort approximately at 2 p.m.

Departs on a week from Saturday from the resort arriving in Geneva in the early afternoon. Spend the night in Geneva (dinner is on your own, breakfast is included).

Depart Sunday morning from Geneva at 8:30 a.m. with an arrival time in Boston at 12:20 p.m. and on Cape Cod approximately 2 p.m.

Schedule for deposit payments is as follows:

- \$549 NOW
- \$500 by September 15, 1999
- \$500 by December 1, 1999

Mail completed trip form with roommate request and check or money order made payable to the Cape Cod Ski Club to Pauline Judge, 21 Trowbridge Path, West Yarmouth, MA 02673. Pauline's phone number is (508) 394-2350. Co-trip leader is Gina Schuh (508) 760-0085.

ALL AIR WEEK-LONG TRIPS INVOLVE A \$50 NON-REFUNDABLE DEPOSIT

Make Copies As Necessary

TRIP / EVENT RESERVATION FORM
YOU MUST BE A CURRENT MEMBER IN GOOD STANDING TO SIGN UP FOR ANY TRIP.

Please fill in ALL information. Trip reservation indicates parties involved understand the Liability Policy printed below.

Trip _____ Date _____

Pickup site: Harwich Barnstable Sagamore

ALL AIR TRIPS INVOLVE A \$50 NONREFUNDABLE DEPOSIT.

Member Number _____

Member Name _____

For airline/ID purposes _____

Address _____

Tel. H _____ W _____

Total # tickets _____ Your Age _____

Room/Condo mate(s): _____

Guest Name/Age (include lesson/rental needs): _____

Amount Enclosed \$ _____

Make checks payable to: Cape Cod Ski Club. Mail/deliver to trip leader. No reservations accepted without a deposit. Each trip leader must receive money for that trip. No transfer of funds through treasury between trips.

In case of emergency, please notify: (someone not on bus)

Name _____

Tel # _____

Guest Emergency _____

Tel # _____

Any special/medical circumstances? _____

LIABILITY POLICY: Participants acknowledge that there are inherent risks in skiing, whitewater rafting, and other sports or events, and agree to hold harmless the Cape Cod Ski Club, its employees and agents, from any claims whatsoever resulting from participation in any Club-related activity. The Cape Cod Ski Club acts solely as agent carrying out services and assumes no responsibility or injury, loss or damage to persons or property, nor for faults or defaults of companies or those carrying out services; nor accidents, injuries, delays, cancellations, changes due to weather, baggage, lodging, insufficient participation, or reasons beyond the control of the Cape Cod Ski Club.

osterville
building
co.



additions • decks
remodeling • trim
kitchens • baths

frank heidenrich
(508) 428-7275

Sold Out! January 29 - February 5 Back to Aspen, Colorado

- This trip costs \$1,279 and includes the following:
- 7 nights, double occupancy in the Hotel Aspen:
 - complimentary continental-style breakfast daily
 - complimentary apres ski buffet daily
 - large rooms with TV, VCR, wet bar with refrigerator, microwave and coffeemaker
 - outdoor heated pool, Jacuzzi and video library
 - lounge with fireplace
 - stunning views of Aspen Mountain
 - free shuttle stop to lifts
 - short 3-block walk to heart of Aspen
 - round trip airport and hotel transfers
 - round trip Cape Cod to Logan transfers
 - all ground transfer tips
 - 5 out of 10 day four-mountain ski pass
 - welcome reception
 - all taxes and service charges

Departs on Saturday morning from Harwich/Exit 10 commuter parking lot at 4:15 a.m.; from Barnstable/Burger King commuter parking lot at 4:45 a.m.; from Sagamore commuter parking lot at 5 a.m. Departs Logan at 7:50 a.m.; transfer in Minnesota departing at 11:30 a.m.; arrive Eagle at 1 p.m. Arrival at the Hotel Aspen is approximately 3:30 p.m.

Departure on Saturday morning from Hotel Aspen at 10:30 a.m.; from Eagle at 2 p.m. with an arrival time in Boston at 10:07 p.m. and on Cape Cod approximately 11:30 p.m.

Schedule for deposit payments is as follows:

- \$429 NOW
- \$430 by September 15, 1999
- \$420 by December 1, 1999

Seniors 70+ should call Bev at (508) 432-4473 for price.

This trip is presently sold out and a waiting list has been established. Mail completed trip form with roommate request and check or money order made payable to the Cape Cod Ski Club to Beverly Murphy, 281 Great Western Road, Harwich, MA 02645. Beverly's phone number is (508) 432-4473. Co-trip leader is Mark Lovely, (508) 394-8286.

Four mountains, famous people

by Mark Lovely and Beverly Murphy

Well we knew it would happen, we just didn't think it would happen this *fast*. The trip to Aspen is full and we have 48 very happy people. The trip travels to Aspen, Colorado, and is inclusive of all four of the mountains: Buttermilk, Highlands, Snowmass, and Aspen (aka Ajax).

With all these choices you will never run out of different possibilities to ski or ride each day. Whether you prefer perfectly groomed trails or deep virgin powder, you will be able to find it here.

Buttermilk: 410 skiable acres, 7 lifts, 45 trails. As a mountain known for its easier trails Buttermilk is actually fairly well divided in regard to terrain: 35% Green, 39% Blue, and 26% Black, all wrapped up in a 2,030 foot vertical descent.

Sun. - Fri., March 5-10

Beat the lines at Killington

Don't wait in line for anything at Killington this week! Join the club for this carpool trip to Vermont's premier resort. Enjoy beautiful accommodations, your choice of hotel- or condo-like rooms with 3 of your buddies, or just you and another.

We'll be staying at the Mountain Green condominiums, just at the far end of the Killington entrance. Condos (4 people) are \$329 per person and hotel room(double occupancy) are \$299 per person.

A 4-day lift ticket is included in the price entitling you to the six great peaks that make up Killington. Skiing additional days is only \$35.



The shuttle bus that services the Mountain Road and all the restaurants and pubs is ready to serve you. Killington is known for its great pubs and live entertainment. Can you hear the Wobbly Barn calling your name?

Send your first \$100 deposit made payable to the Cape Cod Ski Club and reservation form by December 30 to John Halliday, P.O. Box 1709, Harwich, MA 02645.

Second \$100 deposit is due January 17, 2000 and final balance is due February 17. For information call John at (508) 432-1399.

The gang's all here at Killington. This photo is from last time the Club went for a weekend.

Killington 'rocks' says *Skiing* magazine

by Pauline Judge

The September 1999 *Skiing* magazine features an article call "Over the Limit" which highlights the writer's week long adventure at all that is Killington: skiing everything from trees to "granite-hard bumps" and partying in the Mountain Road and his evening at the Wobbly Barn.

The adage "If you don't like New England weather, wait a minute—it'll change" was surely to work here for *Skiing's* Bill Kerig. His photographer Francois Portmann had his work cut out for him too as he snapped Kerig and his cohorts in skiing and

boarding crime dodging everything from trees to long hair. Sounded like they had a crazy night at the Wobbly Barn.

As Kerig passed by that famous sign to the Glades area: "Ski Area Boundary. Dangerous and Desolate Terrain, etc., etc.," he ducked trees, their limbs, and the possible run-in with law-breakin' individuals!

Overall, I'd say Bill Kerig enjoyed his great at Killington, a visit he hadn't made since he was 12. Get your own *Skiing* magazine and set your heart to pumping for another great season!

Buttermilk's #1 claim to fame is their grooming — nearly all of the mountain is groomed each evening. The mountain is also home to a snowboard park with halfpipe and some great boarder trails. Buttermilk also has some of the best restaurants both at the base as well as the summit and at reasonable prices.

Highlands: 651 skiable acres, 8 lifts, 98 trails. At 11,675 feet, Highlands is high enough to enjoy spectacular views and some of the steepest glades. If you're up to it, try the 3,635 foot plunge without stopping (feel the burn!)

If you like glades, you will love Highlands and if you are a novice tree skier we can't recommend a better place to start. The terrain is available to all with a mixture of 20% Green, 33% Blue and 47% Black.

Snowmass: 3,010 skiable acres, 20 lifts, 82 trails. Here, the word "mass" in Snowmass stands for massive (sorry, not Massachusetts!) The longest run measures just over 5.5 miles with a starting point at over 12,500 feet.

Snowmass offers you everything you could want from super-steep plunges to laid-back cruising trails. Its terrain is made up of 10% Green, 52% Blue, and 38% Black. Of the 20 lifts getting you up the mountain, 7 are high speed quads. Snowmass also gets the award for the closest chairlift to the parking lot — the lift at Two Creeks is no more than ten feet away from the parking lot.

Aspen: 675 skiable acres, 8 lifts, 76 trails. Even though it's not the biggest of the four mountains, it is definitely the most famous of the group. Speaking of famous, Aspen is a favorite among the rich and famous. You are bound to see someone who fits into at least one of these categories.

We share something in common with these people, we

know where the best skiing will be this winter and we will both be there.

Enough of the hype, let's get to the facts. Aspen is primarily an expert skier mountain. The terrain features 0% Green, 35% Blue, and 65% Black trails. Beginners and snowboarders need not apply; neither is allowed on the mountain.

Snowboarders do have another option, if you are an accomplished rider, you can take a guided tour off the back of Aspen Mountain. Getting to the top of Aspen is made easy via the Silver Queen gondola.

Remember your ski pass is good at all four of these mountains on the five days of your choice. Once you get the bus routes and times down, you could ski at one mountain in the morning and another in the afternoon.

We're sure that by the middle of the week you'll have your favorites that you will want to go back and ski again.

Aspen, the town

As we mentioned above you might see some famous people (Dottie and Bob Lovely) and definitely some rich ones. The beauty of the town is its diversity.

Even though Aspen is famous as the second home for the elite, it accommodates everyone. Aspen has a wide array of shops, restaurants, and bars from the elegant Hotel Jerome to the Hard Rock Café.

We were able to dine out and purchase a few souvenirs, quite reasonably. If you have half as much fun as we did in Aspen, you will have had one of your best skiing experiences and be begging the club to make it a regular trip every year.



**The sun helps flowers grow.
But it can't help your portfolio.**


Call Christi Kemprecos,
Ski Club member, for a
complimentary consultation ...
(508) 385-2136

SECURE FUTURE
Financial Services
Registered Investment Advisor

- ◆ PERSONAL FINANCIAL PLANNING
- ◆ INVESTMENT ADVICE & MANAGEMENT
- ◆ RETIREMENT PLANNING
- ◆ BUSINESS RETIREMENT TRAINING
- ◆ ESTATE PLANNING
- ◆ ESTATE & TRUST ADMINISTRATION

Secure Future is located at
811 Route 6A, Dennis, MA 02638
(across from the Cape Playhouse)


"Planning for the Milestones of Your Life"



knowledgeable application of technology
**Charlie's Music
& Cape Cod
Pro-Audio**

Tel (508) 771-2307
Tel (508) 775-1710
Fax (508) 775-0308
Email cmcca@capecod.net

CHIP DAVIS
14 Plant Road
Hyannis, MA 02601



Summertime ...
and the beaches are breezy.

Come see us for all your printing needs.
Mention this ad for 15% off your next order.
4507 Route 28 • Cotuit, MA • (508) 428-8700
Email: lujean@capecod.net

Now, four ways to Sugarloaf with the Club

Friday - Saturday, December 10-12

Women's Weekend

by Marilyn Murray

Third year's the charm! Ladies, it's the same wonderful weekend to get away just before the hustle and bustle of the holidays. We've scheduled a weekend later to experience a little less time in the lines.

The bus will depart Harwich at 11:30 a.m., Barnstable at noon, and Sagamore at 12:15 p.m. Pack a lunch and snacks for the ride, although we will make a quick rest stop on the way. Goodie bags are under construction as we speak!

The \$188 package price includes ground transportation, driver tip, 2 nights accommodations in slopeside condos (6 people) with full kitchen facilities, use of the Health and Fitness Center, two-day lift ticket, two Perfect Turn Clinics (one each Saturday and Sunday) and a barbecue lunch on Saturday.

Please send your reservation form with condo-mate preferences and TWO SEPARATE CHECKS, both made payable to the Cape Cod Ski Club: one for your deposit of \$90 and one for a damage deposit of \$20, now, to Marilyn Murray, 376 Pleasant Bay Road, Harwich, MA 02645. Balance of \$98 is due by November 12, 1999. For any and all questions about this wonderful women's getaway weekend, please call me at (508) 430-1607.



The ladies gather for a quick photo before heading out for dinner on the Women's Weekend last year.

Wednesday - Friday, January 19 - 21

Introducing the 'midi'

by Ruth Starr

Just to clarify ... the "midi" is longer than a "mini," yet shorter than a weeklong! Soooo, the club is presenting its first "midi," destination: Sugarloaf/USA.

The midi will run Wednesday, January 19 through Friday, January 21, 2000. Included in this \$205 package: roundtrip motorcoach transportation from Cape Cod (usual day trip pickup times and locations: Harwich 4:30, etc.); two nights slopeside condos; 2-1/2 day lift ticket; Thursday and Friday "Perfect Turn" clinic; use of the Sugarloaf/USA Health and Fitness Club; dinner Thursday night at the Sugarloaf Inn, and breakfast Thursday and Friday mornings at the Sugarloaf Inn.

Dinner on Wednesday night is on your own ... pizza at The Bag?! On Friday we will depart Sugarloaf at 5 p.m. and make a dinner stop in Auburn, Maine.

Please send your reservation form with condo-mate preferences and TWO SEPARATE CHECKS, both made payable to the Cape Cod Ski Club: one for your deposit of \$105 and one for a damage deposit of \$20, by October 30, 1999, to Ruth Starr, P.O. Box 378, Brewster, MA 02631. Balance of \$100 is due by January 5, 2000. For any and all questions about the "midi," please do not hesitate to call me at (508) 896-7558 or Don at (508) 760-2930. Spots are limited.

Sunday - Friday, February 27 - March 3

2000 trek: Sugarloaf

by Ruth Starr

This will be the Club's 15th annual (correct me, Howard!) trek to the Loaf! The adventure begins on Sunday, February 27 and continues to Friday, March 3, 2000.

Included in the five-and-a-half day package are five nights slopeside condo, five and a half day lift ticket, daily "Perfect Turn" clinic, Monday morning mountain tour for the early risers, and Monday night "Wine and Cheese" Part at the Sugarloaf Inn (line dance and mingle with members of other clubs sharing the Loaf with us) and use of the Sugarloaf/USA Health and Fitness Center.

The package price is \$275. Please send your reservation form with condo-mate preferences and TWO SEPARATE CHECKS, both made payable to the Cape Cod Ski Club: one for your deposit of \$150 and one for a damage deposit of \$20, by December 1, 1999, to Ruth Starr, P.O. Box 378, Brewster, MA 02631. Balance of \$125 is due by January 10, 2000.

For any questions, please call me at (508) 896-7558 or Don at (508) 760-2930.

Friday - Sunday, April 7-9

It's reggae weekend, mon

by Marilyn Murray

We used to make this annual pilgrimage to Sugarloaff/USA for the hilarious and sunny Reggae Weekend but haven't in recent years. Let's try it again! The Sugarloaf Inn right at the base of the mountain will be where we stay. The Inn offers all the amenities including restaurant, jacuzzi, lounge, and is walking distance to lifts. Just drive your car up, park it, and have fun the whole weekend. Please call me if you are interested in this fun-filled weekend so we can get the best rates. (508) 430-1607.

Trip leaders needed

A few good men and women ... we need you! The idea of leading a day, weekend, mini, or weeklong trip may sound daunting, but the Club is in the process of developing a guide book for trip leaders. It will cover most of the questions you may have about being a trip leader.

The only qualities needed are a desire to do a good job, ability to follow directions, enthusiasm, and organization skills.

If you are interested in being a trip leader, please fill in the information below. Experience is not necessary ... we're willing to train you!

Trip leaders will be selected and given a trip to run and on weeklong air trips may be sent on a familiarization (fam) trip to the destination to research accommodations, restaurants, resort amenities, and skiing and snowboarding, of course!



Trip leaders and volunteers sportin' their new Reggae Days T-shirts from Attitash during Thank You Trip 99.

Name _____

Phone (best time to call) _____

Address _____

2000 • SURVEY SAYS • 2001

Please take the time to fill out this survey and mail it to the Travel Committee, c/o John Halliday, P.O. Box 1709, Harwich, MA 02645. This survey will be used to determine destinations for the 2000-2001 ski season.

For destination questions, please keep in mind that this survey is for the 2000-2001 season, not THIS season. This season we are traveling to Aspen, Colorado; Park City, Utah; and Val d'Isere, France. Please list destinations you'd like to see considered in the future.

DESTINATION:

1. In order of preference, list the two destinations you would most like to visit:

Western U.S.

a. _____

b. _____

Europe:

a. _____

b. _____

Canada:

a. _____

b. _____

2. What month would you like to travel: _____

3. Would you go to Europe each year if the club had a trip? Yes No

COST:

4. Would you be willing to pay extra for a trip package that included one, two or three meals each day? Yes No If yes, which meals: _____

5. What is your budget for a trip that includes airline ticket, lift ticket, accommodations and ground transfers:

Western U.S. \$ _____

Europe \$ _____

Canada \$ _____

TRAVELING

6. Would you prefer to travel on: Weekday (which day) _____
 Saturday Sunday

7. What do you considered to be the most important feature offered in a weeklong trip, besides destination, i.e., quality of accommodations, meal plan, close to lifts/slopes: _____

8. How to you feel the Club does with scheduling trips with minimal overlapping? _____

Thank you for taking the time to fill out the survey. Your ideas and comments assist the Travel Committee and Executive Board make decisions regarding trips and how your club dollars are spent.

If you would like to make additional comments, please use additional paper, call a Board member or the Travel Chairman. Board meetings are open to members of the Club and we welcome your comments and suggestions.

CAPE COD SKI CLUB, INC. BY-LAWS
 — Adopted February 16, 1998

Article I. Name
 The name of the Association shall be the Cape Cod Ski Club, Inc.

Article II. Purpose
 The Association shall be a non-profit, educational organization in accordance with Chapter 180 of the Massachusetts General Laws dedicated to developing better citizens by providing properly supervised skiing and other activities for its members and participants. The Association shall:

- 2.1 Establish and maintain an organization for adults twenty-one (21) years or older interested in the sport of skiing.
- 2.2 Organize and promote ski trips.
- 2.3 Provide instruction in skiing.
- 2.4 Provide programs for the benefit of its members and their guests. All activities of the Association shall be limited to those specified in Section 501(c)(3) of the Internal Revenue Code, there will be no inurement to members of the Association, and the substantial part of the Association's activities will be legislative in nature.

Article III. Membership

- 3.1 Application for membership is open to any person twenty-one (21) years of age and over. Only those members who have paid their dues and are in good standing shall be entitled to vote.
- 3.2 A member may be expelled from the Association for nonpayment of dues, or conduct deemed not to be in the best interest of the Association by the majority of the Executive Committee, i.e., checks returned for non-sufficient funds, violation of Association policies.

Article IV. Dues

- 4.1 The annual dues shall be established from year to year by the Executive Committee of the Cape Cod Ski Club, Inc. If, in the event, after establishment of the said dues, ten (10) or more members of the Cape Cod Ski Club, Inc. are not satisfied with the annual dues, then the ten members may place their objections to the annual dues in writing to the Executive Committee. Upon the receipt of the objections by the members of the annual dues, the Executive Committee shall place the issue of the annual dues up for vote before the general membership at the next scheduled general meeting. At that time, the issue of the annual dues will be determined by a majority vote of the members present at that general meeting and will be the dues for the present fiscal year. Notwithstanding the determination by the majority of the members present at the general meeting to establish the annual dues, on the following years the Executive Committee shall then continue to be able to establish the annual dues.
- 4.2 The annual dues of the Association shall run and correspond to the fiscal year, June 1 to May 31.

Article V. Officers and their Duties

- 5.1 The officers of the Association shall be members of the Association and shall consist of a President, a Vice President, a Treasurer, a Secretary and three Members-At-Large.
- 5.2 Officers shall be elected at the annual meeting and shall hold office for a term of one (1) year or until their successors have been elected. In no event shall any officer serve more than two (2) consecutive terms in that position with the exception of the treasurer who may serve three (3) consecutive terms in that position.
- 5.3 The President shall preside at all meetings of the Association and the Executive Committee and shall appoint tellers when needed.
- 5.4 The Vice President shall perform the duties of the President in his or her absence and shall aid and assist the President whenever requested.
- 5.5 The Secretary shall maintain the permanent records of the Association and the meetings of the Executive Committee.
- 5.6 The Treasurer shall:
 - (a) receive and pay out all monies of the Association, keeping a record of each transaction with proper receipts and statements.
 - (b) present a financial statement of the Association, showing receipts and disbursements, at all meetings of the Executive Committee
 - (c) make available a financial statement of the Association, showing receipts and disbursements, at all meetings of the Association.
 - (d) deposit in a local bank all monies

in a checking account under the name "Cape Cod Ski Club, Inc." The Treasurer shall be empowered to issue checks up to one thousand dollars (\$1,000). All other checks exceeding that limit shall be co-signed by either the President, Vice President or Secretary.

5.7 The Members-At-Large shall report the issues and concerns of the general membership to the Executive Committee and perform other duties as requested.

Article VI. Executive Committee

- 6.1 The Executive Committee shall consist of the President, the Vice President, the Treasurer, the Secretary, three (3) Members-At-Large, and the chairmen of the standing committees as set forth in these By-Laws. The immediate past-president may be a member of the Executive Committee, ex-officio, without voting rights.
- 6.2 The Executive Committee shall meet at its discretion and a majority of its voting members shall constitute a quorum at each meeting. The members of the Executive Committee must attend a majority of the meetings and cannot be absent more than three (3) Executive Committee meetings. Absence from three meetings will result in removal from the Executive Committee.
- 6.3 The Executive Committee shall have general supervision over the Association; promote and aid in setting up all desirable activities; make appointments to fill any vacancies occurring among the members of the Executive Committee; appoint an auditor on an annual basis no later than May 31; and shall approve members of all standing and special committees.

Article VII. Standing Committees

- 7.1 The Standing Committee are:
 - (a) Membership Committee; (b) Newsletter Committee; (c) Publicity Committee; (d) Social Committee; (e) Travel Committee
- 7.2 The Executive Committee may appoint such other committees, including extra activity committees, as needed.

Article VIII. Nominating Committee

- 8.1 The Nominating Committee shall consist of five (5) members appointed by the Executive Committee by October 1st of each year.
- 8.2 Said members shall have served as past board members or on standing or special committees.
- 8.3 Serving on the Nominating Committee precludes inclusion on the proposed slate.
- 8.4 The Nominating Committee, prior to the annual meeting, shall:
 - (a) present for election, a slate of officers: president, vice president, secretary, treasurer, and three members at large. The presentation of such slate shall not preclude additional nominations by any member from the floor at the annual meeting. The proposed slate must be published for the general membership at least one month prior to the annual meeting.
 - (b) recommend the chairs of the standing committees: membership, newsletter, publicity, social, travel.

Article IX. Dissolution
 Upon dissolution of the Association, the Executive Committee shall, after paying or making provision for the payment of all liabilities of the Association, dispose of all of the assets of the Association exclusively for the purposes of the Association in such manner or to such organization or organizations as are operated exclusively for scientific and/or educational purposes and shall at the time qualify as an exempt organization or organizations under Chapter 501(c)(3) of the Internal Revenue Code of 1954 (or the corresponding provision of any future United States Internal Revenue law) as the Executive Committee shall determine. Any of such assets not so disposed of shall be disposed of by the Probate Court of the County of Barnstable with the consent of the Attorney General of the Commonwealth of Massachusetts exclusively for such purposes or such organization or organizations which are organized and operated exclusively for such purposes as said Court shall determine.

Article X. Quorum
 At any meeting of the Association, a quorum for the transaction of business shall consist of at least ten (10) voting members.

Article XI. Amendments
 These By-Laws may be amended by affirmative vote of two-thirds (2/3) of the

members present who are entitled to vote, at any meeting of the Association, provided that notice of the proposed amendments shall have been given, in writing, to all members at least seven (7) days prior to the meeting.

CAPE COD SKI CLUB POLICIES
 — Adopted February 16, 1998

I. Membership

- A. A person becomes a member when their check is received by the Membership Chair.
- B. A member is in good standing with the Club when they have no outstanding debts to the Club and/or have not received written notice of dismissal from the Executive Committee for infractions of Club by-laws and/or policies.
- C. A person who reaches the age of 80 or over and has been a member of the Club for the previous 5 consecutive years will receive a lifetime membership at no cost. This member will not be eligible for early sign-up vouchers.
- D. Dues
 1. All Executive Committee members and Committee Chairs shall pay their annual dues by the September General meeting.
 2. All trip leaders shall pay their annual dues by the November General meeting.
 3. Only Club members in good standing may reserve space for trips.
 4. Members who join on or after March 1st of each year may pay one half (1/2) of the yearly dues; said membership shall expire at the end of the association's current fiscal year (May 31st).
- E. Membership List. The Membership Chair shall supply an up-to-date membership list to all trip leaders by one month prior to their trip.

II. Travel

- A. The Club newsletter and Club meetings shall not be used for the advertising of or for soliciting participation in trips not approved by the Executive Committee.
- B. Day, Weekend, Weeklong, Mid-Week Trips:
 1. No household may run more than three (3) trips in any one ski season. Exceptions may only be made by the Executive Committee.
 2. Trip leaders are held accountable for discrepancies in trip finances.
 3. Refunds and cancellation policy:
 - a. Refunds for day trips will be made if cancellation is received by the trip leader one (1) week (7 days) prior to the date of the trip.
 - b. Any member cancelling their participation on a day trip within six (6) days of the date of the trip shall lose their deposit unless their space is filled by the trip leader with the next member from the waiting list.
 - c. Refund and cancellation policies vary for weekend, weeklong and mid-week trips.
 4. Ski Passes, Gift Certificates or other discounts.
 - a. The trip leader shall be notified prior to the trip of the member's intention to use a ski pass, gift certificate or other discount.
 - b. No member shall use a ski pass, gift certificate or discount if said use affects the group rate.
 5. Guests are invited to attend a weekend trip at an additional cost of \$20, which is not applicable to membership.
 6. Guests are not permitted to attend mid-week, week-long, or member-only day trips. Attendance on these trips is accomplished only through membership in the Club.
 7. Complimentary tickets:
 - a. The first complimentary ticket shall go to the trip leader.
 - b. The second complimentary ticket shall go to the assistant trip leader, who on day trips is defined as the member responsible for the second bus, and for weekend, mid-week, and week-long trips is the co-trip leader.
 - c. Additional complimentary ticket(s):
 - i. Day trip: raffle awarded in the amount paid for that lift ticket.
 - ii. Weekend, mid-week, week-long: raffle awarded in an amount not to exceed that paid for the trip.
 - d. If no complimentary ticket is received from a mountain for a day trip, then the Club shall pay for only the trip leader's ticket.
 8. Non-skiers are welcome on all trips as long as their presence does not affect the group rate. If the group rate is affected, the non-skier shall pay for a lift

ticket.

9. Behavior:
 - a. Consideration for the other trip participants is expected from all Club members, guests and family members.
 - b. Members are responsible for the behavior of their guests and family members.
 - c. The use of illegal drugs or abuse of alcohol is prohibited.
 - d. The use of radios and/or televisions without headphones is prohibited.
 - e. Smoking is not permitted on the bus.
 - f. It is the responsibility of all Club trip participants to be present at the time and place appointed for trip departure.
 - g. Each trip participant is asked to sit in his same seat to and from the ski area.
 - h. If other arrangements are made for transportation to or from the ski area, the trip leader must receive prior notification.
 - i. A guest (a non-member aged 21 or over) must be accompanied by a member on that trip.
 - j. A family member must be accompanied by a member on that trip.
10. Proposals of weekend, mid-week, and car-pool week-long trips
 - a. All trip proposals shall be presented to the Travel Committee prior to June 30th of each year. Proposals shall include at a minimum trip leader's name, destination, accommodations, mode of transportation, time of departure, deposit and cancellation policy, and cost.
 - b. The Travel Committee will hear all proposals; then the Travel Chair shall present them to the Executive Committee.
 - c. Once a trip has been approved by the Executive Committee, any changes in the departure date/time, cost, accommodations or trip leader shall be approved by the Executive Committee.
 - d. Deposits for weekend, mid-week, and week-long trips shall be made to the Treasurer monthly.
 - e. Each person shall have a bed available in a bedroom. No person shall be assigned a bed in a common area.
- C. Vouchers:
 1. Any member receiving a voucher must redeem said voucher during the same ski season as it was issued.
 2. Only one (1) voucher may be used per trip.
 3. Vouchers are not transferable.

III. General Policy

- A. Violation of Club Policy:
 1. A first offense shall warrant a verbal warning from the Executive Committee.
 2. A second offense shall warrant a written warning from the Executive Committee.
 3. Any additional offenses shall warrant the forfeiture of Club membership for that year.
 4. All disciplinary actions shall be handled by the President or Vice President along with consultation with the Executive Committee.
- B. Members with grievances are encouraged to address the Executive Committee at their meeting or the President or Vice President.
- C. By-laws and policies shall be printed in the newsletter annually and made available at general meetings.

IV. Exception or change.
 Any exception or changes to these policies must be brought before the Executive Committee.

CLAS-SKI-FIEDS are free to Cape Cod Ski Club members. You can sell, trade, or buy anything here. Call (508) 394-2350 and list your item, email downhill@capecodskiclub.com or mail it to Ski Club Class-Ski-fieds, 21 Trowbridge Path, West Yarmouth, MA 02673.

Tennis Raquet for sale. Wilson Hyper Hammer, 2.3. Just purchased, used only a few times. Cost \$249. Sell for \$175. Call Don Calabrese (508) 375-0571.

Men's Ski Boots for sale. Nordica (black) used twice. Size 11-1/2 to 12. Reduced from \$150 to \$100. Call Joy (508) 398-2093.

REDECORATING: sofa, 4 chairs, beige rug, 9x12. All like new, coordinating. Best offer. Lawn mower, used 1 season, really! Call (508) 428-6806.

Skis for sale. Elan scx shaped skis. 153cm. New. Never used. \$225. Call Shirley (508) 255-7268.

Storage. We offer storage at great rates. Also office and retail space, on the bike path in Harwich. Discount for Ski Club members. Call Nancy (508) 430-7777.

Skis for sale. Rossignol Viper C 1997 model. 188cm & bindings. Excellent cond. Used 1 season. \$140. Call Don (508) 375-0571.

KITTY KITTY CATNIP—all natural catnip toy made in Aroostook County Maine. Contains 100% Maine organic grown catnip harvested at just the right time. 100% money back guarantee to bring happiness to a playful kitty! 100% stem, twig and sawdust free! \$3.95 regular weight fabric for gentle cats, \$4.95 heavy-duty weight fabric for rough and tough cats. Shipping and handling additional. Please send orders to G. CLARK SERVICES, 1040 Ridge Road, Oakfield, Maine, 04763, check, money order, or MC/VISA credit cards accepted or email order to ginaclark@webtv.net



Volunteer or be a trip leader and get out there! No experience necessary. We're happy to train you! Free you can go on the third few trip!

Membership cards for the 1999-2000 season will be mailed after processing.

Make Copies As Necessary

Membership Application for 1999-2000 Season
 Membership Year runs June 1 through May 31

(Print legibly) Name _____

MAILING Address _____

City & State _____ Zip _____

Phone (Home) _____ (Work) _____

Renewal (from last year) New Membership If new member, how did you hear about us? _____

Downhill Cross Country Snowboard Telemarking

I permit the publishing of my home telephone number in the newsletter YES NO

Are you 75 years of age or over? YES NO If yes, your age is _____

I HAVE READ AND AGREE TO THE LIABILITY POLICY AND WAIVE ALL LIABILITY.

Signed _____ Date _____

LIABILITY POLICY: Participants acknowledge that there are inherent risks in skiing, whitewater rafting, and other sports or events, and agree to hold harmless the Cape Cod Ski Club, its employees and agents, from any claims whatsoever resulting from participation in any Club-related activity. The Cape Cod Ski Club acts solely as agent carrying out services and assumes no responsibility or injury, loss or damage to persons or property, nor for faults or defaults of companies or those carrying out services; nor accidents, injuries, delays, cancellations, changes due to weather, baggage, lodging, insufficient participation, or reasons beyond the control of the Cape Cod Ski Club.

Annual dues \$40. Price subject to change June 1. Minimum age for membership is 21 years of age. Make all checks payable to Cape Cod Ski Club. MAIL ONLY MEMBERSHIP WITH THIS FORM. Membership Chairman cannot process monies for trips.

Mark envelope Attn: Membership and mail to: P.O. Box 146, Hyannis, MA 02601-0146. MEMBERSHIP CARDS WILL BE MAILED AFTER PROCESSING.

More Cool Club Clothes

Denim Sports Shirts ... light or dark, long sleeve with great new Club logo. Available in S, M, L, XL Wow ... just \$16

Cool New Fleece Vests now available for you! Colorful Kokopelli dancers embroidered across the backside of these new black vests. The front sports "Cape Cod Ski Club" and one Kokopelli. Available in S, M, L, XL Only \$42

Call Dottie Lovely at (508) 394-0488.